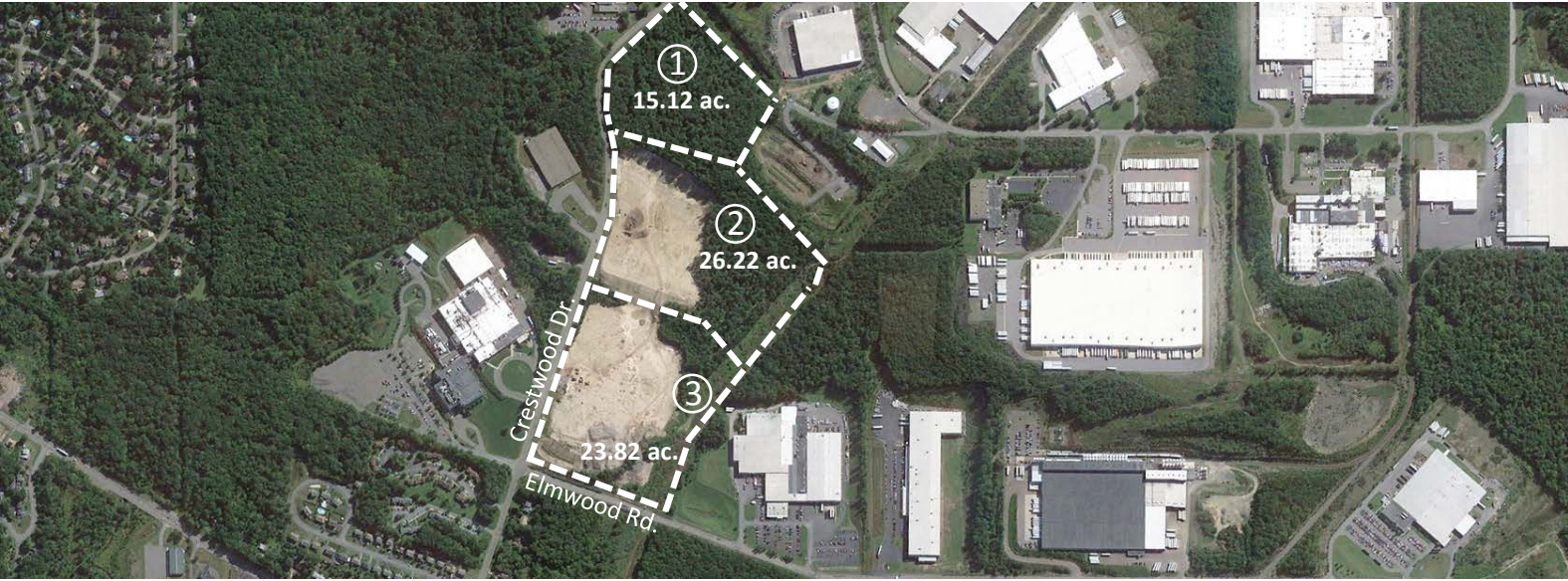
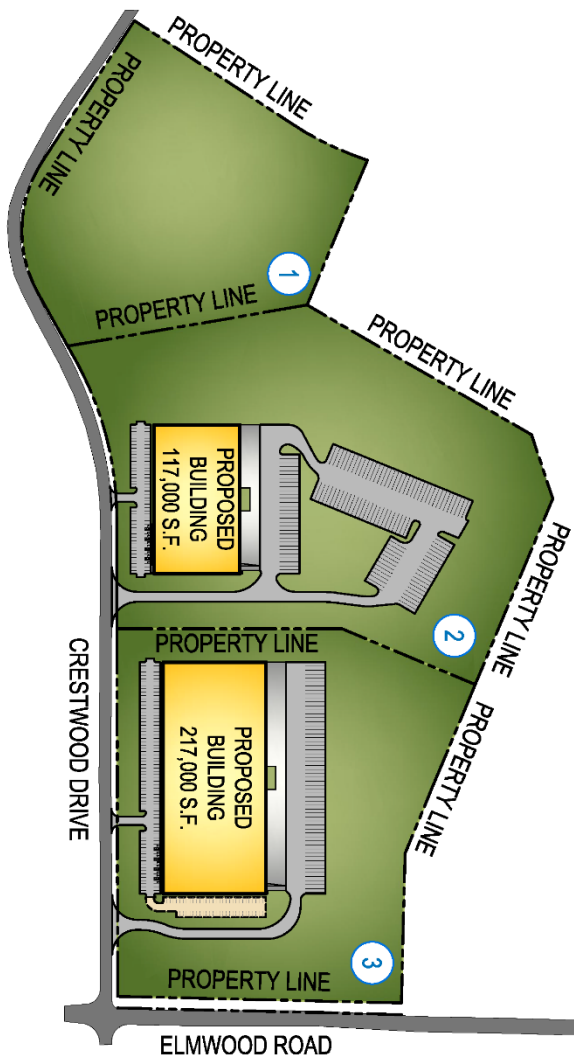


# PARCEL 28, LOTS 1, 2 & 3

Crestwood Drive, Crestwood Industrial Park, Wright Township, PA



## BUILD-TO-SUIT KOZ SITES NEAR I-81 AND I-80



### Property Information

These three contiguous lots totaling 65.16 acres are being offered as build-to-suit industrial opportunities by Mericle Commercial Real Estate Services. The lots are located in Crestwood Industrial Park, a long-established business park, which offers quick access to I-81 and I-80. The lots are served by natural gas, public water and sewer, and reliable power and telecom services. Lot 3 can support a building as large as 217,000 SF, while lot 2 can accommodate up to 117,000 SF. Lot 1 is available for overflow trailer parking and/or storage. The lots have Keystone Opportunity Zone (KOZ) status, which can mean substantial state and local tax savings for eligible companies.

