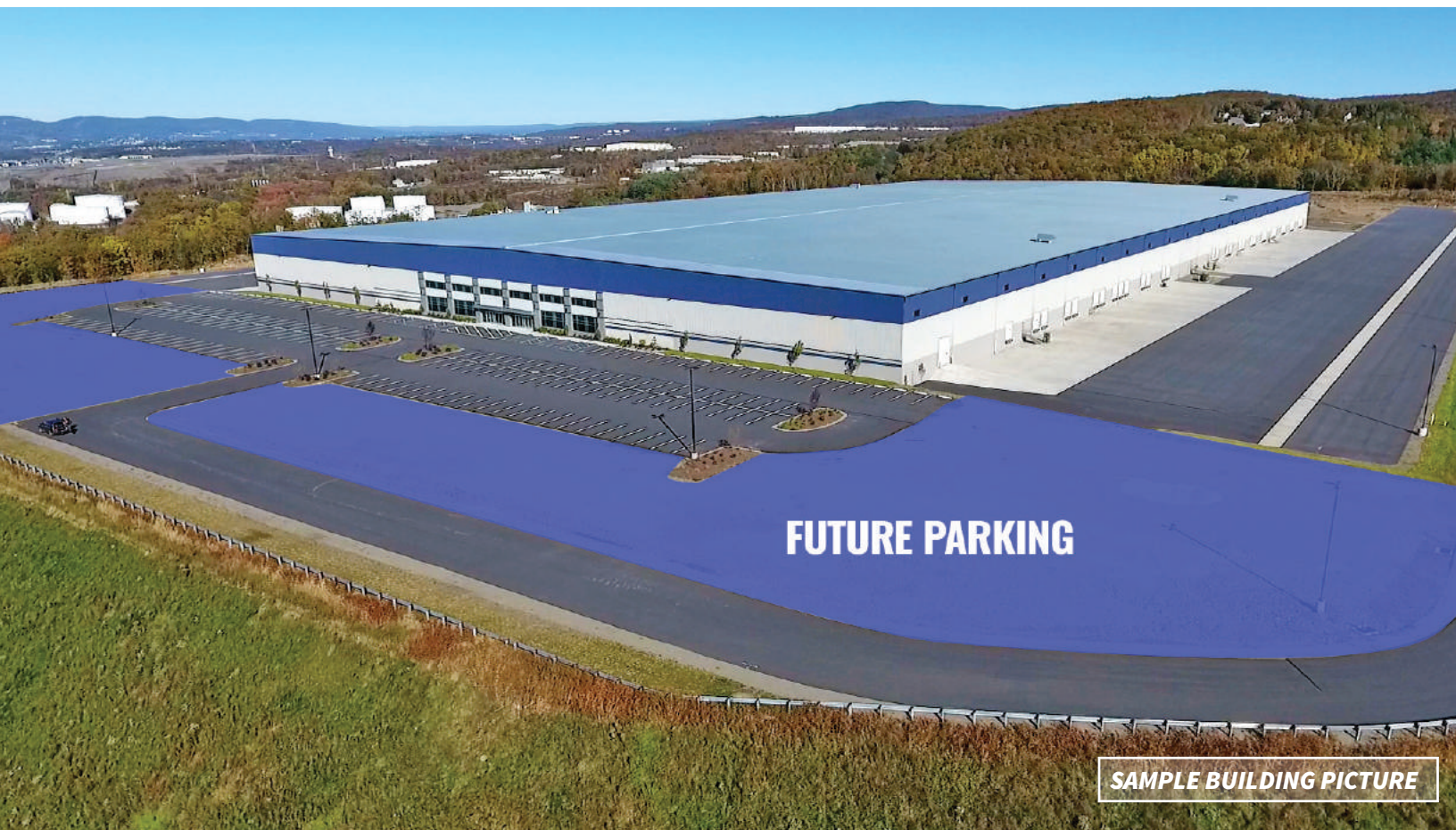
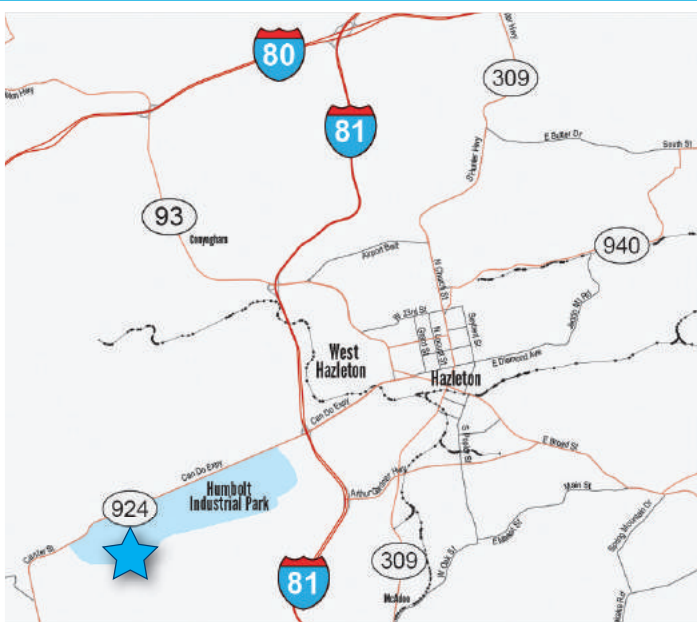


651,000 - 837,000 SF
ON 54.08 ACRES

610 OAK RIDGE ROAD
PARCEL #57 & #59
HUMBOLDT INDUSTRIAL PARK
HAZLETON, PA 18202



GREAT ACCESS TO I-81 & I-80!



DIRECTIONS TO HUMBOLDT INDUSTRIAL PARK:

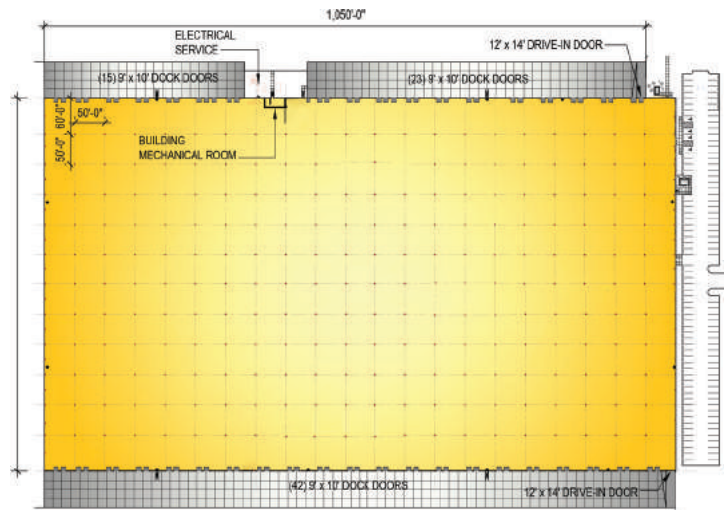
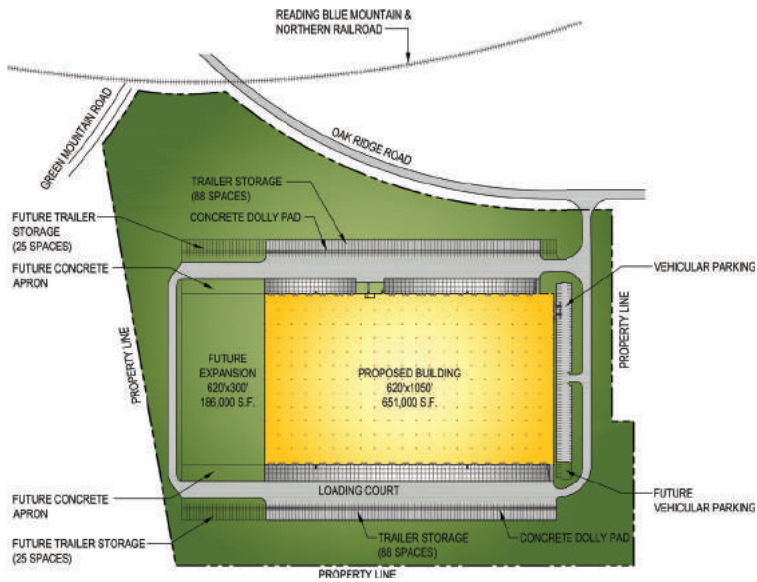
Traveling North on I-81 - Take Exit 143 for Rt. 924 toward Hazleton. At the end of the exit ramp, turn left. Drive approximately 1.2 miles. Humboldt Industrial Park will be on the left.

Traveling South on I-81 - Take Exit 143 for Rt. 924 toward Hazleton. At the end of the exit ramp, turn right. Drive approximately 1.2 miles. Humboldt Industrial Park will be on the left.

651,000 - 837,000 SF

ON 54.08 ACRES

610 OAK RIDGE ROAD
PARCEL #57 & #59
 HUMBOLDT INDUSTRIAL PARK
 HAZLETON, PA 18202



Information shown is purported to be from reliable sources. No representation is made to the accuracy thereof, and is submitted subject to errors, omissions, prior sale/lease, withdrawal notice, or other conditions.

PROPOSED PROPERTY SPECIFICATIONS

- 54.08 acre site
- Building shall contain 651,000 SF expandable to 837,000 SF
- 1,050' (length) x 620' (depth); Expansion 300' (length) x 620' (depth)
- Bay spacing shall be 50' x 50' spacing with a 60' deep staging bay
- Floor slab shall be 7" thick concrete reinforced with welded steel mats
- Ceiling clear height shall be approximately 36'
- Roof system shall be MR24 standing seam roof system with R-30 insulation
- The building shall contain eighty (80) 9'-0" x 10'-0" vertical lift dock doors with 40,000 lb capacity Rite-Hite, mechanical levelers with bumpers and two (2) 12'-0" x 14'-0" vertical lift drive-in doors with concrete access ramp
- Heating system shall be energy efficient Cambridge direct-fire units in warehouse areas, and gas / electric packaged roof-top HVAC units in office areas
- Electrical service shall be 800 AMP, 277/480 V, 3-phase, expandable to 4000 AMP
- Interior warehouse lighting shall be LED designed at 18-22 foot candles based on an open floor plan
- Fire protection system shall be an early suppression fast response (ESFR) wet sprinkler system
- Provisions for domestic water and natural gas shall be provided
- All utilities shall be separately metered
- On-site vehicular parking shall be approximately (124) spaces (expandable)
- On-site trailer storage shall be for approximately (176) trailer spaces with (50) future spaces
- The loading dock apron shall have 8" thick x 60' deep, reinforced concrete apron at loading dock
- The trailer storage area shall have an 8' wide, 8" thick reinforced concrete dolly pad



MERICLE
 COMMERCIAL REAL ESTATE SERVICES

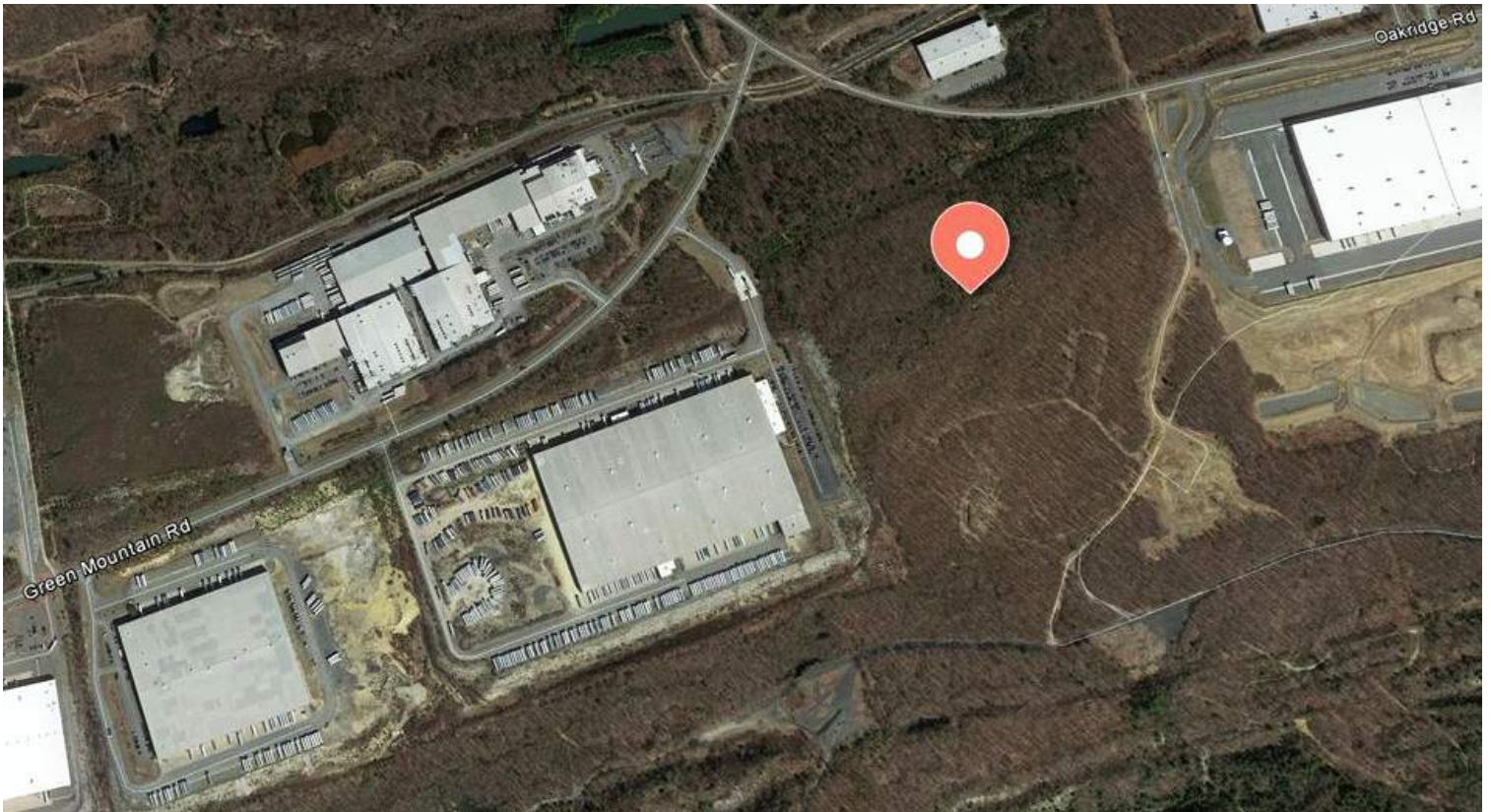
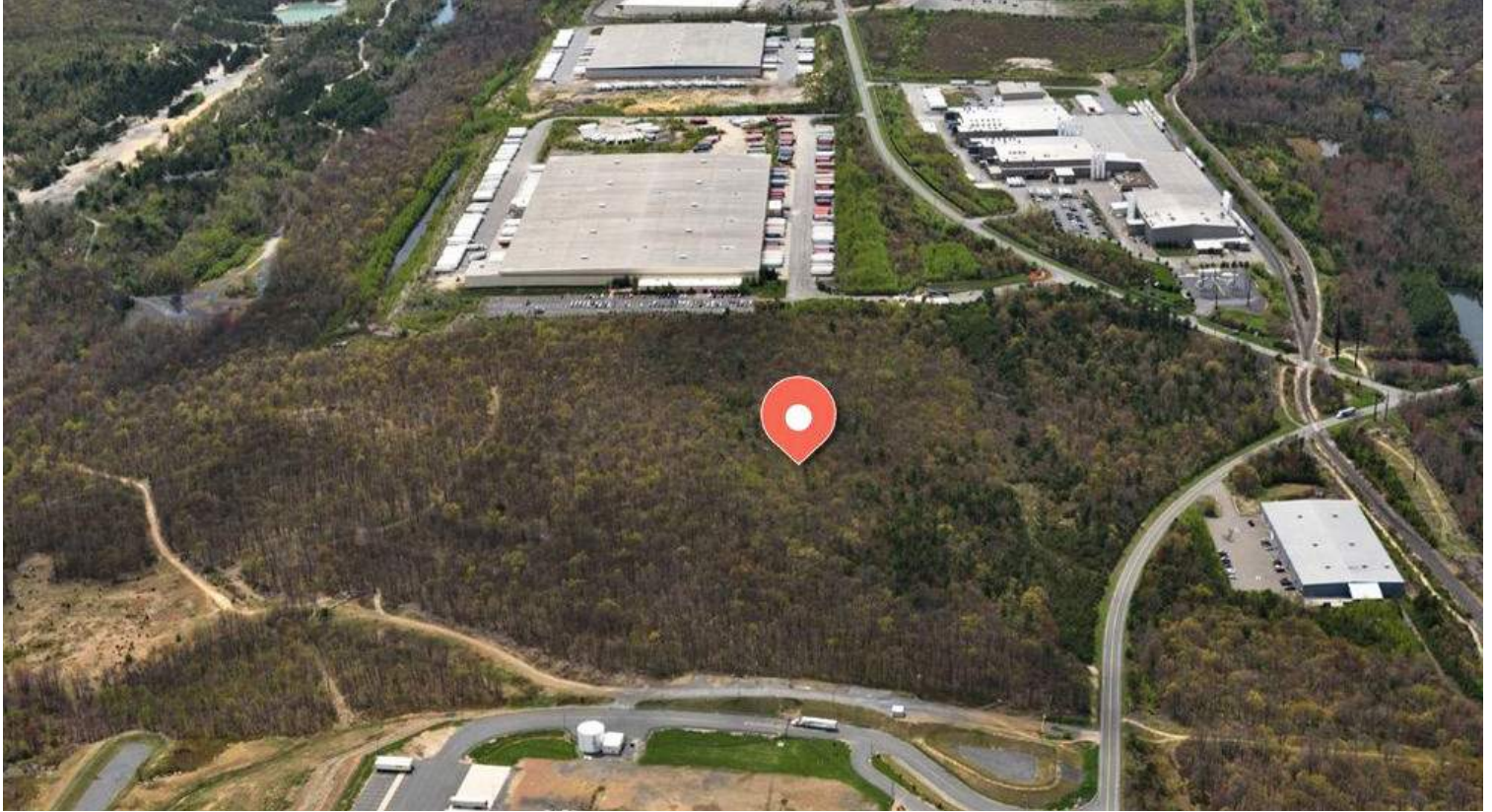


mericle.com

SERVING PENNSYLVANIA'S 1-81 CORRIDOR • 570.823.1100
 EAST MOUNTAIN CORPORATE CENTER • 100 BALTIMORE DRIVE, WILKES-BARRE, PA 18702

610 OAK RIDGE ROAD

**HUMBOLDT INDUSTRIAL PARK
HAZLE TOWNSHIP, PA
651,000 SF - 837,000 SF**



570.823.1100
mericle.com



East Mountain Corporate Center
100 Baltimore Drive
Wilkes-Barre, PA 18702

Developing Northeastern Pennsylvania's I-81 Corridor Since 1985

610 OAK RIDGE ROAD

**HUMBOLDT INDUSTRIAL PARK
HAZLE TOWNSHIP, PA
651,000 SF - 837,000 SF**



570.823.1100
mericle.com



East Mountain Corporate Center
100 Baltimore Drive
Wilkes-Barre, PA 18702

Developing Northeastern Pennsylvania's I-81 Corridor Since 1985

610 OAK RIDGE ROAD

**HUMBOLDT INDUSTRIAL PARK
HAZLE TOWNSHIP, PA
651,000 SF - 837,000 SF**



570.823.1100
mericle.com



East Mountain Corporate Center
100 Baltimore Drive
Wilkes-Barre, PA 18702

Developing Northeastern Pennsylvania's I-81 Corridor Since 1985