



**FOR
LEASE**

25,774 SF

**225 STEWART ROAD
HANOVER INDUSTRIAL ESTATES
HANOVER TOWNSHIP, PA**

.....

INDUSTRIAL

**LOCATED LESS THAN
FIVE MINUTES FROM
INTERSTATE 81**

**CENTRALLY LOCATED
WITHIN THE SCRANTON/
WILKES-BARRE
LABOR MARKET.**



LESS THAN 5 MINUTES FROM INTERSTATE I-81

mericle.com



570.823.1100



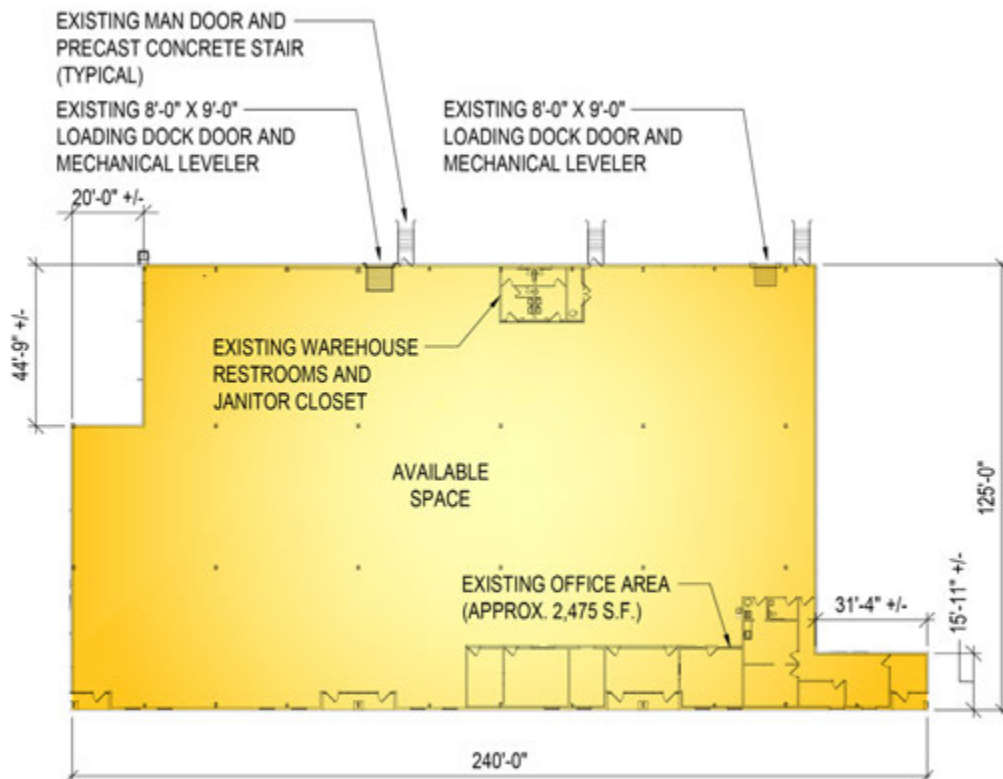
PLANS

Information shown is purported to be from reliable sources. No representation is made to the accuracy thereof, and is submitted subject to errors, omissions, prior sale/lease, withdrawal notice, or other conditions.

SITE PLAN



BUILDING PLAN



FOR LEASE

225 STEWART ROAD, HANOVER TOWNSHIP, PA

mericle.com | mericlereadytogo.com

SPECS

Information shown is purported to be from reliable sources. No representation is made to the accuracy thereof, and is submitted subject to errors, omissions, prior sale/lease, withdrawal notice, or other conditions.

SIZE

- ▶ **AVAILABLE SPACE:** 25,774 SF.
- ▶ **ACREAGE:** 6.7 Acres.
- ▶ **BUILDING DIMENSIONS:** 125' (length) x 320' (width).
- ▶ **BUILDING SIZE:** 40,000 square feet.
- ▶ **EXISTING OFFICE SPACE:** Approx. 2,475 SF.

BUILDING CONSTRUCTION

- ▶ **FLOOR:** 6" thick, reinforced concrete floor slab.
- ▶ **CEILING HEIGHT:** Approx. 21'-6" at low eave.
- ▶ **ROOF:** Butler Manufacturing MR-24 standing seam metal roof.
- ▶ **EXTERIOR WALLS:** Consisting of architectural masonry, aluminum/glazing entrance systems and metal wall panels with insulation.
- ▶ **COLUMN SPACING:** 40' x 40' typical.

LOADING

- ▶ **DOCK DOORS:** Two (2) 8'-0" x 9'-0" vertical lift dock doors with a minimum 30,000 LB capacity mechanical levelers with bumpers by Rite-Hite or equal.

PARKING

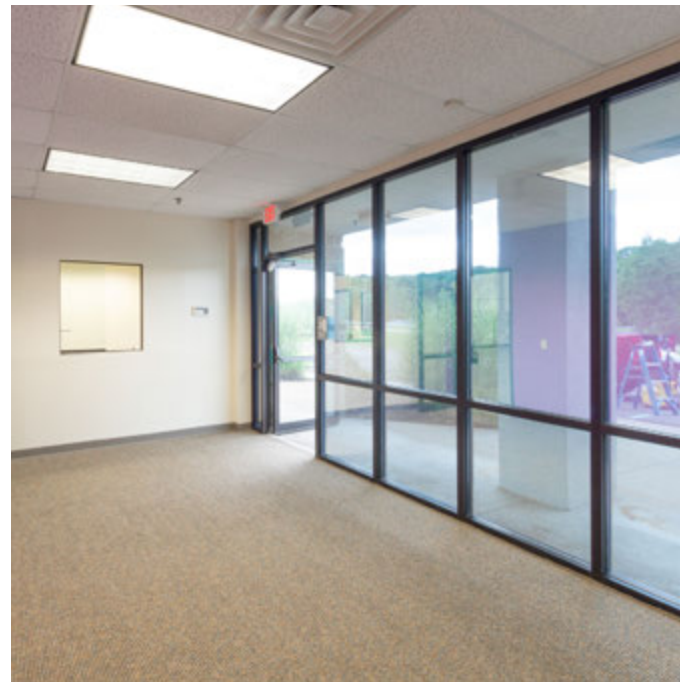
- ▶ On-site parking for approximately fifty (50) vehicles.

FEATURES

- ▶ Asphalt paving, including light duty pave in vehicle parking areas..
- ▶ Professionally prepared and maintained landscaping.
- ▶ Marquee sign at entrance to site.
- ▶ LCTA Bus Route serves this park.

UTILITIES

- ▶ **WAREHOUSE HEATING:** One (1) energy efficient, roof mounted Trane direct-fire unit.
- ▶ **ELECTRICAL SERVICE:** (1) 800 Amp, (1) 400 Amp, (1) 100 Amp, 208/120 Volt, 3-phase electrical service.
- ▶ **WAREHOUSE LIGHTING:** Energy efficient LED fixtures.
- ▶ **OFFICE LIGHTING:** Available office space and warehouse restrooms have 2 x 4 LED fixtures.
- ▶ **FIRE PROTECTION:** Class III, Ordinary Hazard sprinkler system.
- ▶ **UTILITIES:** All utilities shall be separately metered. Provisions for domestic water and natural gas are provided



LABOR DRAW

More than 700,000 people live within 30 miles of Hanover Industrial Estates. Seventeen college campuses with close to 50,000 enrolled students are within an hour drive.

This 25,774 square foot industrial facility is located less than 2 miles from I-81 and is less than 10 minutes from Downtown Wilkes-Barre. CVS Caremark, Adidas, Patagonia, Chewy.com, Wren Kitchens, and more call Hanover Industrial Estates home.



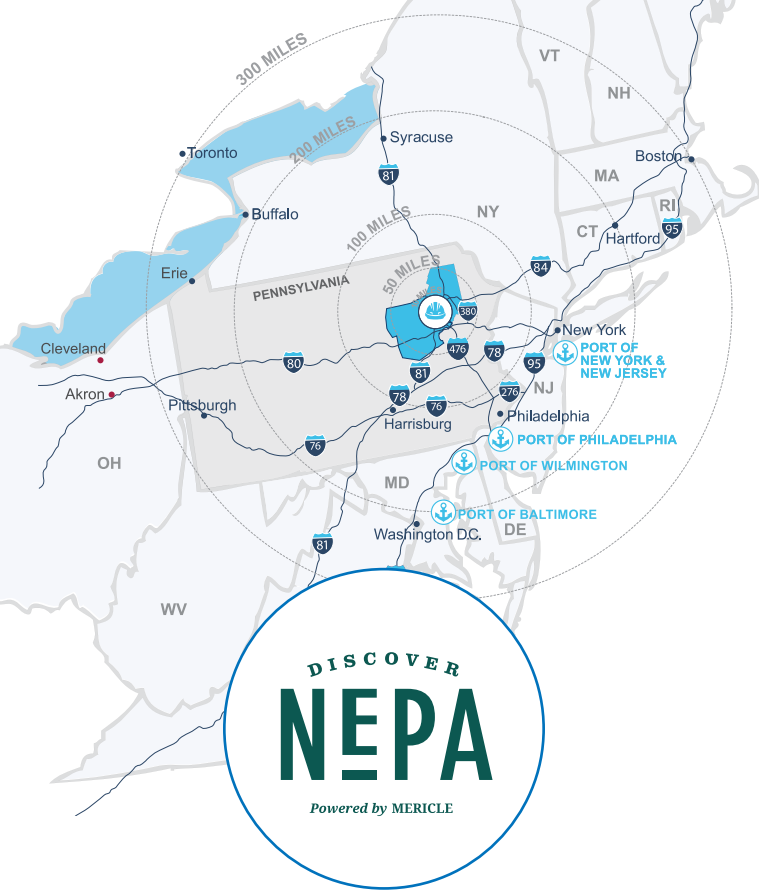
JOB TRAINING

Job training grants will help reduce your costs in Hanover Industrial Estates. Mericle will arrange meetings between your leadership and the officials who coordinate these programs.

FOR LEASE

225 STEWART ROAD, HANOVER TOWNSHIP, PA

mericle.com | mericlereadytogo.com



Northeastern Pennsylvania (NEPA) is close to big cities, but features affordable living, safe neighborhoods, access to recreation, and the opportunity to be heard and make a difference.

Check out **DiscoverNEPA.com** (search "Wilkes-Barre") for events, shopping, dining, and many, many things to do!

Mericle is Northeastern Pennsylvania proud.

CENTRALLY LOCATED ON NORTHEASTERN PENNSYLVANIA'S I-81 CORRIDOR



TRAVEL DISTANCES

CITY

MI AWAY

Downtown Wilkes-Barre, PA	5
Scranton, PA	24
Delaware Water Gap, PA	57
Allentown, PA	69
Morristown, NJ	100
Philadelphia, PA	116
Harrisburg, PA	102
Port of Newark, NJ	127
New York, NY	128
Syracuse, NY	155
Baltimore, MD	181
Hartford, CT	212
Washington DC	224
Pittsburgh, PA	263
Boston, MA	313



Mericle, a Butler Builder®, is proud to be part of a network of building professionals dedicated to providing you the best construction for your needs.

BOB BESECKER, Vice President
bbesecker@mericle.com

JIM HILSHER, Vice President
jhilsher@mericle.com

BILL JONES, Vice President
bjones@mericle.com

To learn more, please call one of us at 570.823.1100 to request a proposal and/or arrange a tour.

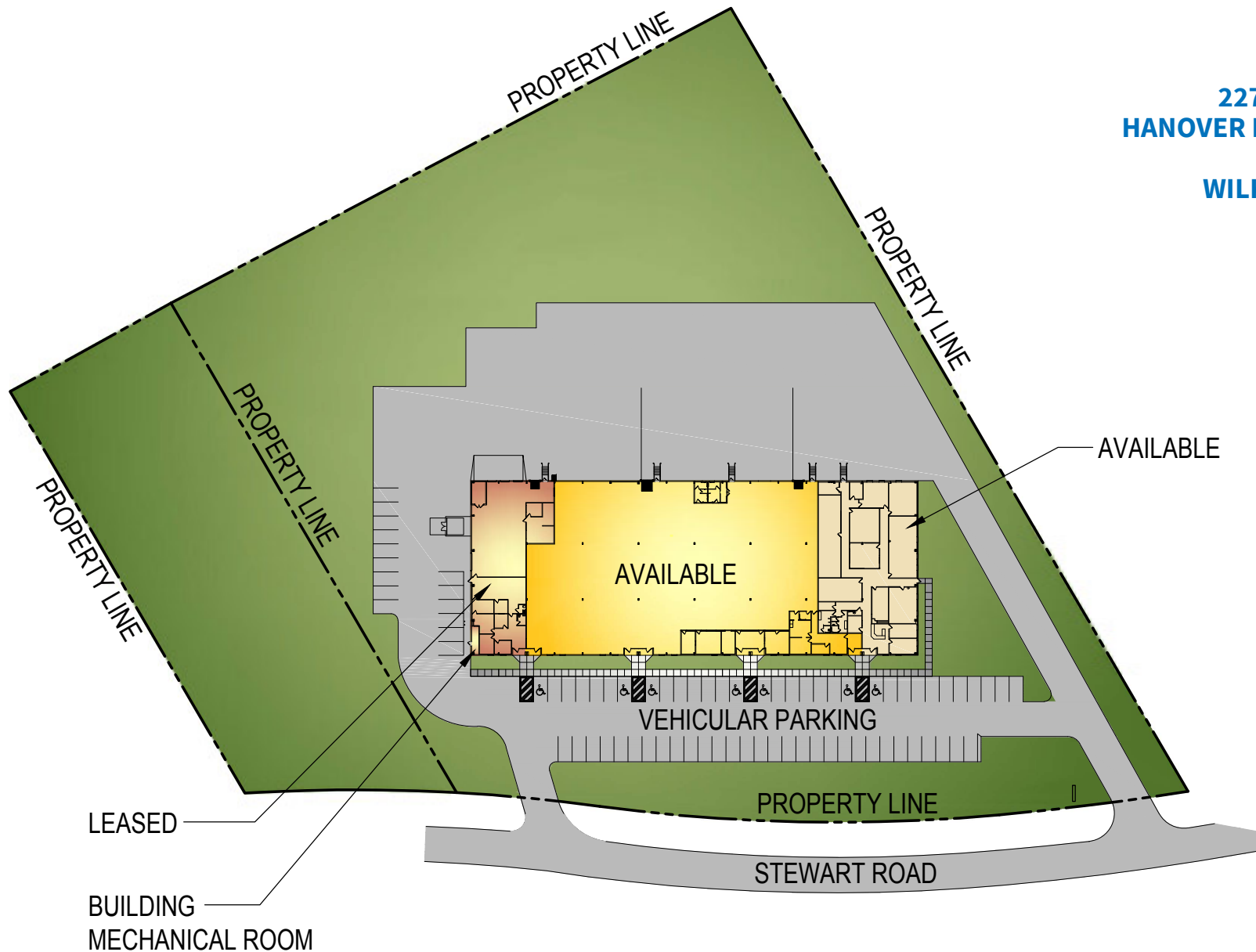
mericle.com  **570.823.1100**



CONCEPTUAL SITE PLAN

AVAILABLE 25,774 S.F. SPACE
WITHIN AN EXISTING 40,000 S.F. BUILDING

PARCEL #10E
227-237 STEWART ROAD
HANOVER INDUSTRIAL ESTATES
HANOVER TOWNSHIP
WILKES-BARRE, PA 18706



These plans have been prepared solely for
marketing purposes for the exclusive use of
-- Mericle Commercial Real Estate Services

570.823.1100



mericle.com



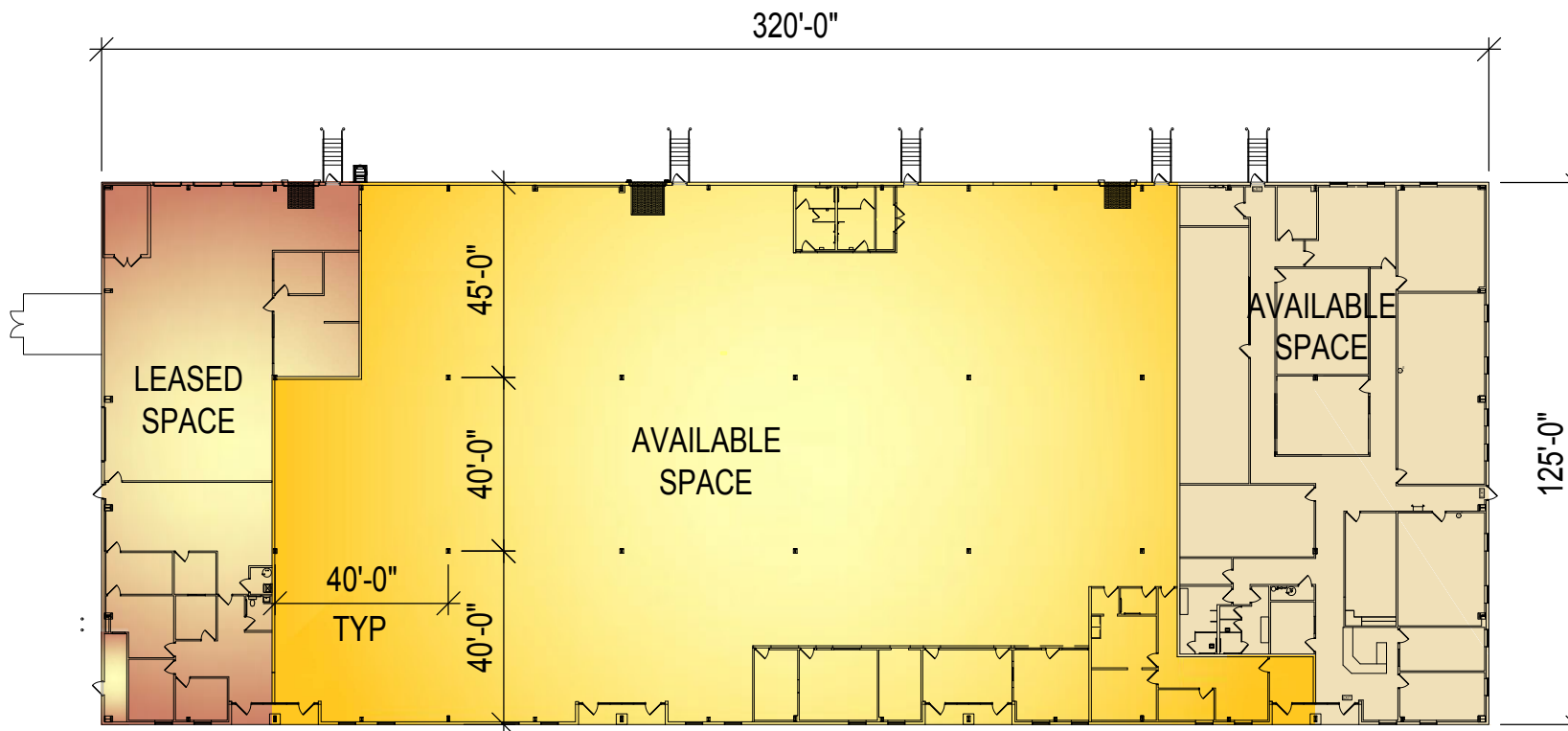
East Mountain Corporate Center
100 Baltimore Drive, Wilkes-Barre, PA 18702

WE BUILD BUILDINGS.
WE BUILD CAREERS.
WE BUILD COMMUNITIES.

CONCEPTUAL BUILDING PLAN

**AVAILABLE 25,774 S.F. SPACE
WITHIN AN EXISTING 40,000 S.F. BUILDING**

**PARCEL #10E
227-237 STEWART ROAD
HANOVER INDUSTRIAL ESTATES
HANOVER TOWNSHIP
WILKES-BARRE, PA 18706**



These plans have been prepared solely for marketing purposes for the exclusive use of -- Mericle Commercial Real Estate Services

570.823.1100



mericle.com



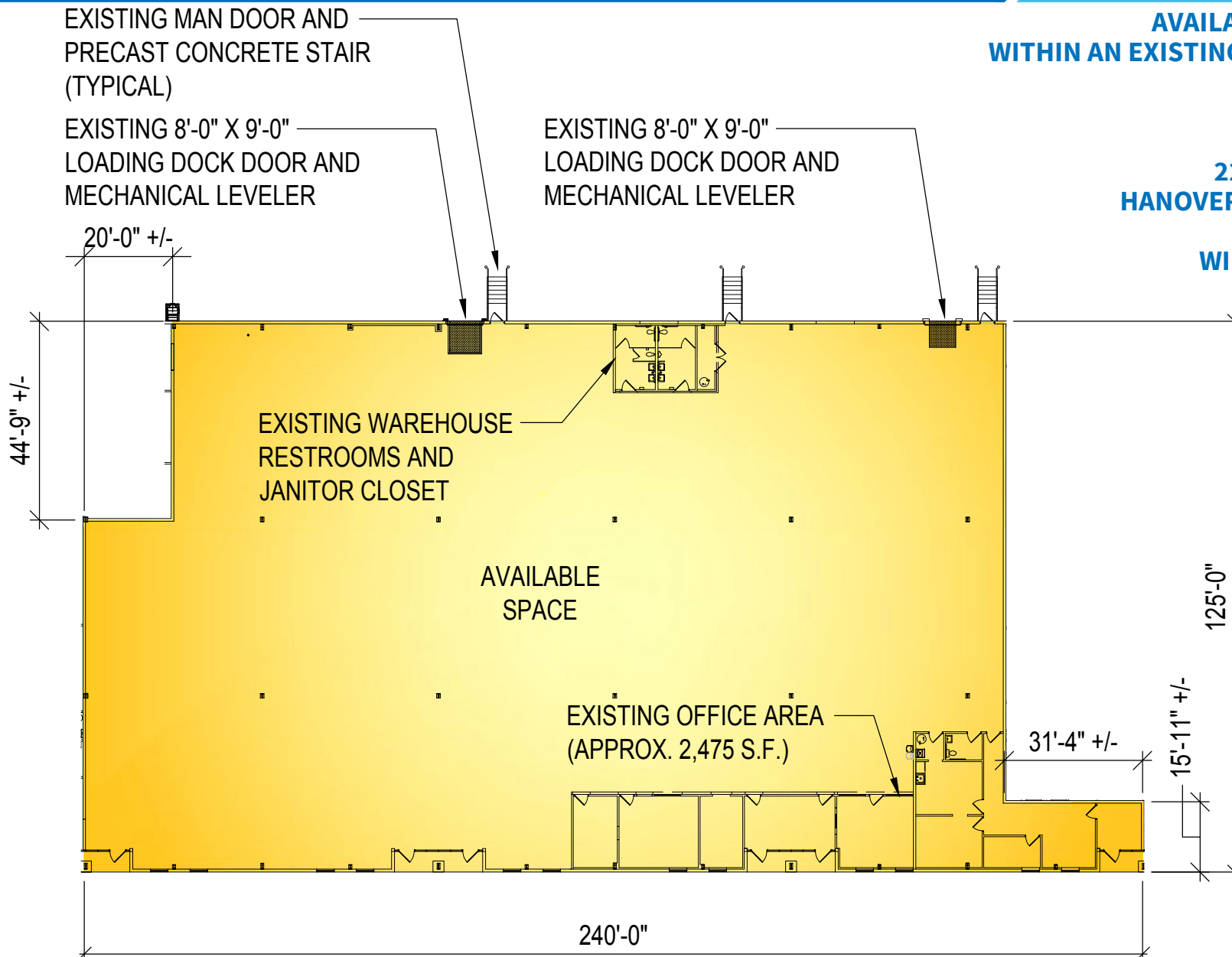
East Mountain Corporate Center
100 Baltimore Drive, Wilkes-Barre, PA 18702

WE BUILD BUILDINGS.
WE BUILD CAREERS.
WE BUILD COMMUNITIES.

CONCEPTUAL FLOOR PLAN

**AVAILABLE 25,774 S.F. SPACE
WITHIN AN EXISTING 40,000 S.F. BUILDING**

**PARCEL #10E
227-237 STEWART ROAD
HANOVER INDUSTRIAL ESTATES
HANOVER TOWNSHIP
WILKES-BARRE, PA 18706**



These plans have been prepared solely for marketing purposes for the exclusive use of -- Mericle Commercial Real Estate Services

Q:\Shared\Properties\HIE\225 Stewart (10E) (J2640)\Base Bldg. (J2640)\2640\mdc\DWG-SPEC\mktg\MKG - 227-237 STEWART ROAD (25774 SF) (120423).dwg LD

570.823.1100



mericle.com



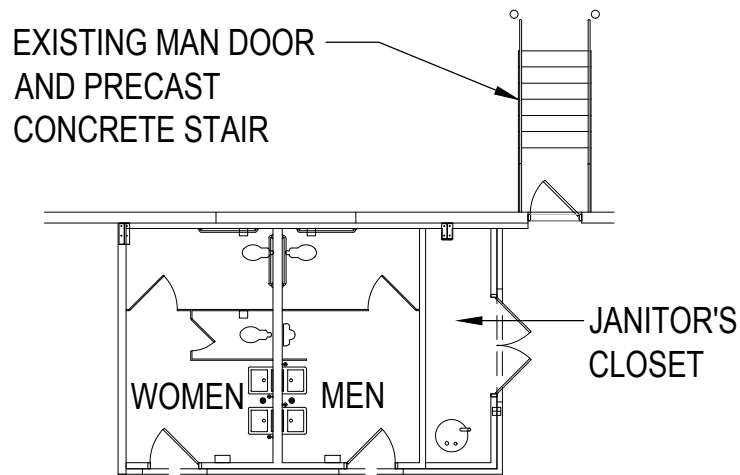
East Mountain Corporate Center
100 Baltimore Drive, Wilkes-Barre, PA 18702

WE BUILD BUILDINGS.
WE BUILD CAREERS.
WE BUILD COMMUNITIES.

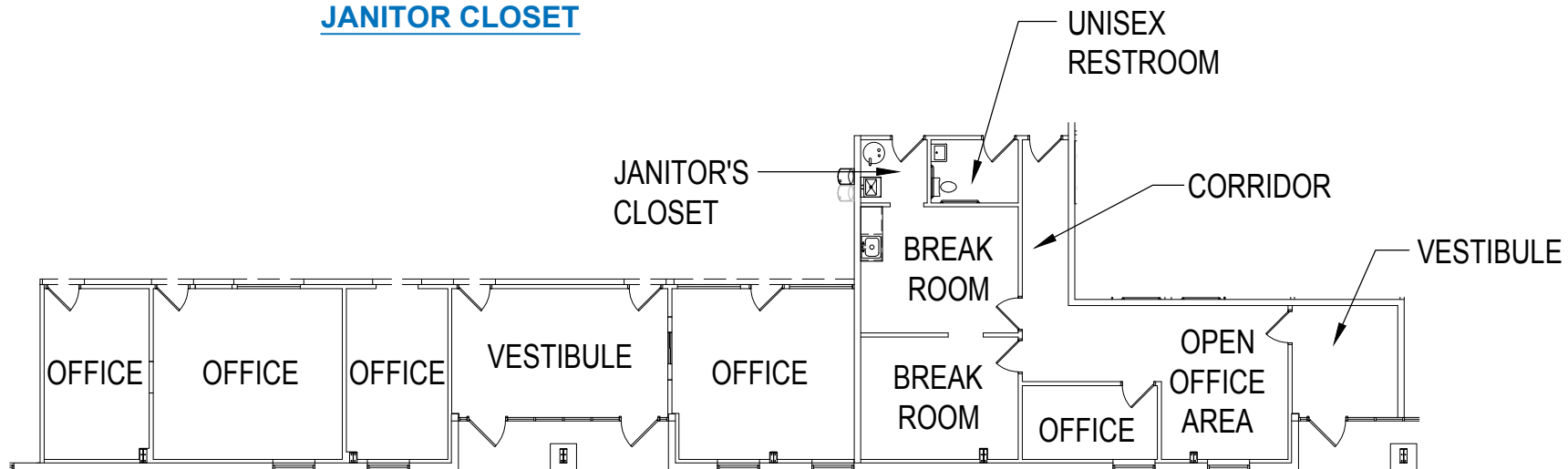
CONCEPTUAL OFFICE PLANS

**AVAILABLE 25,774 S.F. SPACE
WITHIN AN EXISTING 40,000 S.F. BUILDING**

**PARCEL #10E
227-237 STEWART ROAD
HANOVER INDUSTRIAL ESTATES
HANOVER TOWNSHIP
WILKES-BARRE, PA 18706**



EXISTING RESTROOMS / JANITOR CLOSET



EXISTING OFFICE AREA (APPROX. 2,475 S.F.)

These plans have been prepared solely for
marketing purposes for the exclusive use of
-- Mericle Commercial Real Estate Services

Q:\Shared\Properties\HIE\225 Stewart (10E) (J2640)\Base Bldg. (J2640)\2640\mdc\DWG-SPEC\mktg\MKG - 227-237 STEWART ROAD (25774 SF) (120423).dwg LD

570.823.1100



mericle.com



East Mountain Corporate Center
100 Baltimore Drive, Wilkes-Barre, PA 18702

WE BUILD BUILDINGS.
WE BUILD CAREERS.
WE BUILD COMMUNITIES.

SITE AMENITIES

- Site contains 6.7 acres
- On-site parking for approximately fifty (50) vehicles
- Asphalt paving, including light duty pave in vehicle parking areas
- Professionally prepared and maintained landscaping
- Marquee sign at entrance to site
- LCTA Bus Route serves this park

**AVAILABLE 25,774 S.F. SPACE
WITHIN AN EXISTING 40,000 S.F. BUILDING**

**PARCEL #10E
227-237 STEWART ROAD
HANOVER INDUSTRIAL ESTATES
HANOVER TOWNSHIP
WILKES-BARRE, PA 18706**

EXISTING BUILDING IMPROVEMENTS

- Building contains 40,000 square feet
- Building dimensions are 125'-0" (width) x 320'-0" (length)
- Available space is approximately 25,774 square feet
- Available space contains existing office fit-out and warehouse restrooms
- 40'-0" x 40'-0" bay spacing with a 45'-0" deep staging bay
- 6" thick, reinforced concrete floor slab
- Exterior wall system consisting of architectural masonry, aluminum/glazing entrance systems and metal wall panels with insulation
- *Butler Manufacturing*, MR-24 standing seam
- Available space contains two (2) 8'-0" x 9'-0" vertical lift dock doors with a minimum 30,000 LB capacity mechanical levelers with bumpers by *Rite-Hite* or equal

UTILITIES AND BUILDING SYSTEMS

- Available space is served by (1) 800 amp, (1) 400 amp, (1) 100 amp, 208/120V, 3-phase electrical service
- Available office space and warehouse restrooms have 2 x 4 LED fixtures
- Available space warehouse lighting consists of energy efficient LED fixtures
- Available space warehouse heating system consists of one (1) energy efficient, roof mounted *Trane* direct-fire unit
- Available space has an existing, Class III, Ordinary Hazard sprinkler system
- Provisions for domestic water and natural gas are provided
- All utilities are separately metered

These plans have been prepared solely for marketing purposes for the exclusive use of -- Mericle Commercial Real Estate Services

Q:\Shared\Properties\HIE\225 Stewart (10E) (J2640)\Base Bldg. (J2640)\2640\mdc\DWG-SPEC\mktg\MKG - 227-237 STEWART ROAD (25774 SF) (120423).dwg LD





**FOR
LEASE**

25,774 SF

**225 STEWART ROAD
HANOVER INDUSTRIAL ESTATES
HANOVER TOWNSHIP, PA**

.....

**PHOTO
COLLAGE**



FOR LEASE

225 STEWART ROAD, HANOVER TOWNSHIP, PA

mericle.com



FOR LEASE

225 STEWART ROAD, HANOVER TOWNSHIP, PA

[mericle.com](https://www.mericle.com)



FOR LEASE

225 STEWART ROAD, HANOVER TOWNSHIP, PA

[mericle.com](https://www.mericle.com)



FOR LEASE

225 STEWART ROAD, HANOVER TOWNSHIP, PA

[mericle.com](https://www.mericle.com)



FOR LEASE

225 STEWART ROAD, HANOVER TOWNSHIP, PA

[mericle.com](https://www.mericle.com)



Mericle, a Butler Builder®, is proud to be part of a network of building professionals dedicated to providing you the best construction for your needs.

BOB BESECKER, Vice President
bbesecker@mericle.com

JIM HILSHER, Vice President
jhilsher@mericle.com

BILL JONES, Vice President
bjones@mericle.com

To learn more, please call one of us at 570.823.1100 to request a proposal and/or arrange a tour.

mericle.com  570.823.1100

