



**FOR
LEASE**

20,394 SF

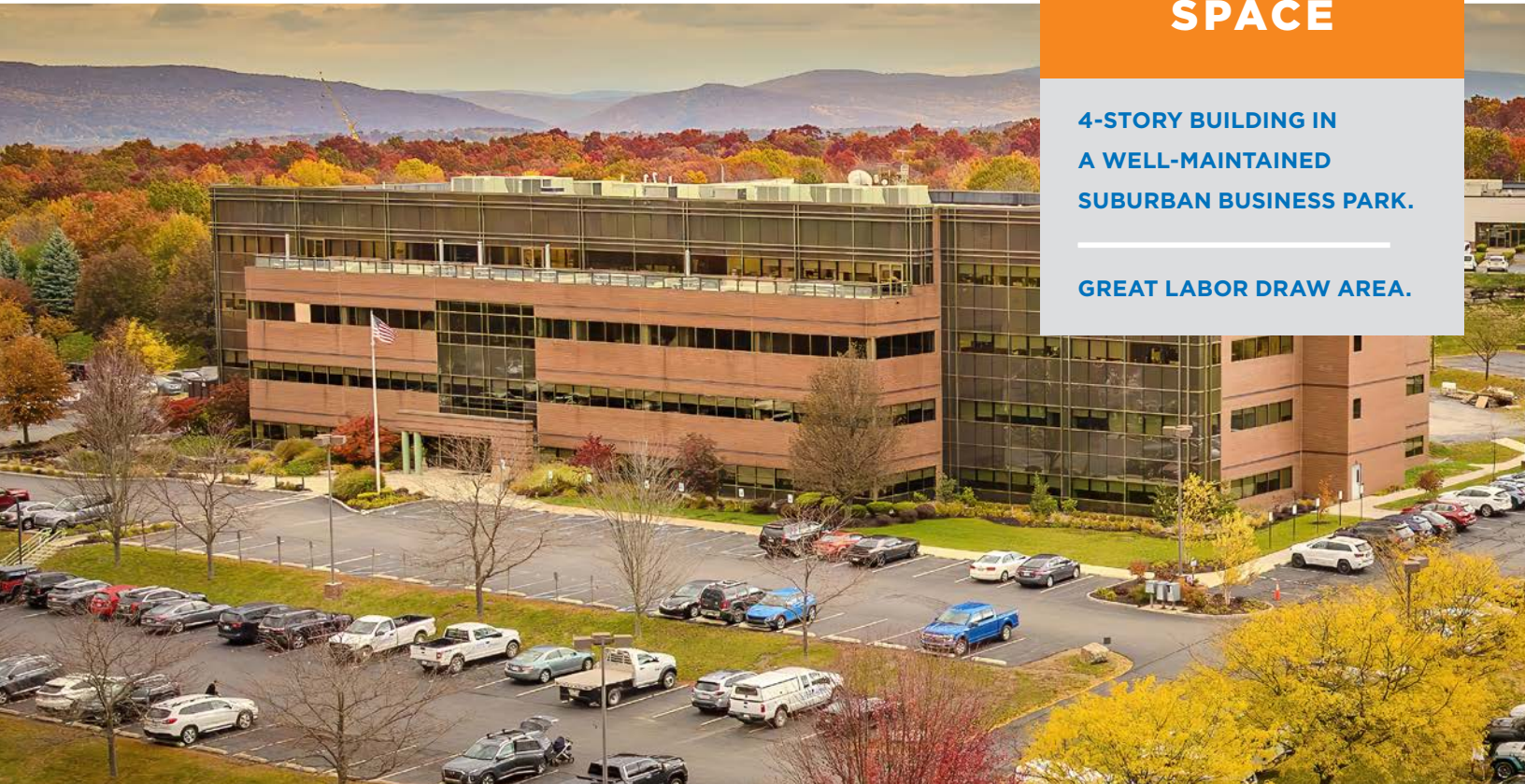
**100 BALTIMORE DRIVE
EAST MOUNTAIN CORPORATE CENTER
PLAINS TOWNSHIP (WILKES-BARRE), PA**

.....

OFFICE SPACE

**4-STORY BUILDING IN
A WELL-MAINTAINED
SUBURBAN BUSINESS PARK.**

GREAT LABOR DRAW AREA.



**FURNISHED CLASS A OFFICE SPACE NEAR I-81, I-476
AND GEISINGER WYOMING VALLEY MEDICAL CENTER**

mericle.com  **570.823.1100**



PLANS

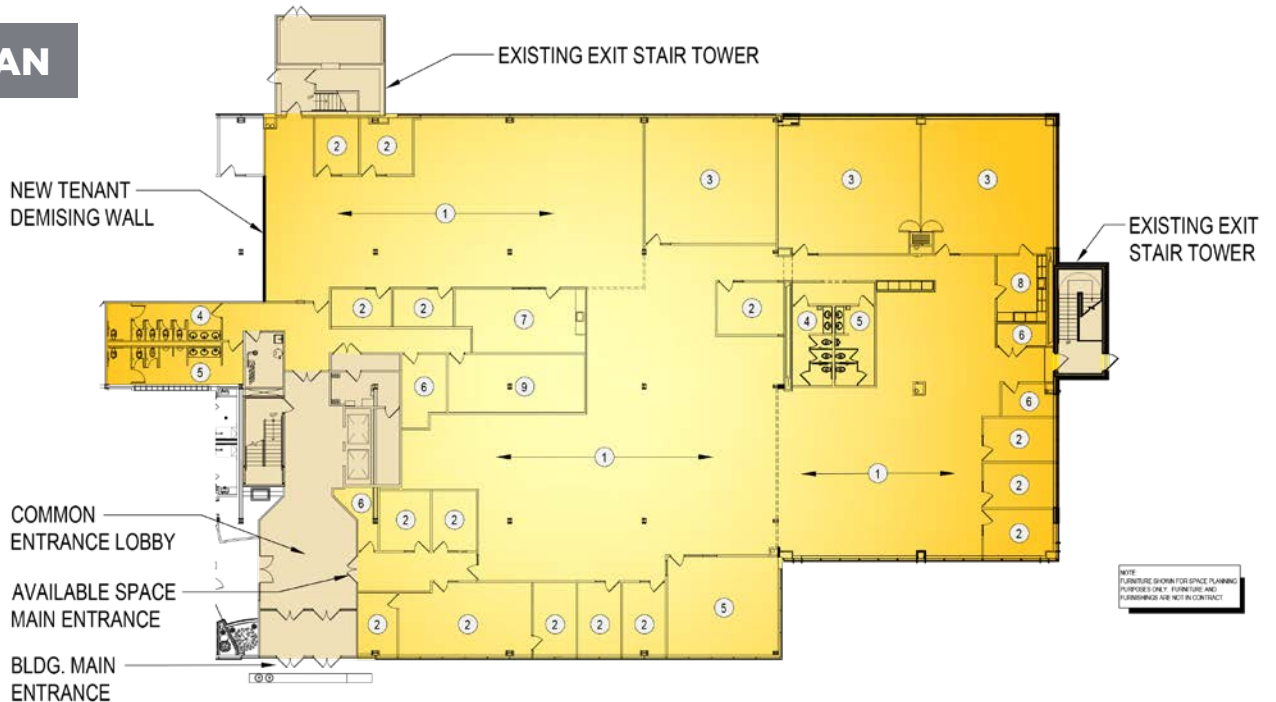
Information shown is purported to be from reliable sources. No representation is made to the accuracy thereof, and is submitted subject to errors, omissions, prior sale/lease, withdrawal notice, or other conditions.

SITE PLAN



- ① OPEN OFFICE AREA
- ② OFFICE
- ③ CONFERENCE / TRAINING ROOM
- ④ WOMEN'S ROOM
- ⑤ MEN'S ROOM
- ⑥ STORAGE
- ⑦ BREAK ROOM
- ⑧ PANTRY
- ⑨ UPS / IT ROOM

FLOOR PLAN



NOTE: FURNITURE SKETCHES FOR SPACE PLANNING PURPOSES ONLY. FURNITURE AND PLUMBING ARE NOT IN CONTRACT.

FOR LEASE

100 BALTIMORE DRIVE, WILKES-BARRE, PA

mericlereadytogo.com/100baltimore

SPECS

Information shown is purported to be from reliable sources. No representation is made to the accuracy thereof, and is submitted subject to errors, omissions, prior sale/lease, withdrawal notice, or other conditions.

SIZE

- ▶ Four-story Class A Office Building containing 126,413 SF.
- ▶ **AVAILABLE SPACE:** 20,394 SF located on the first floor with access through the recently renovated modern first floor main lobby area.
- ▶ **ACRES:** Total site acreage consisting of 14.12 acres. Parcel A contains approx. 10.12 acres and Parcel B contains approx. 4.00 acres.

BUILDING CONSTRUCTION

- ▶ **BUILDING STRUCTURE:** Steel structure by *Butler Manufacturing* and contains 4" concrete floor slabs on each floor.
- ▶ **EXTERIOR WALLS:** The exterior walls are designed with a combination of brick masonry veneer and thermally-broken, aluminum frame ribbon windows, and storefront window systems with bronze tinting and architectural features such as full height glass walls in select areas.
- ▶ **ROOF:** Fully-adhered EPDM roof with interior storm leaders.
- ▶ **FLOOR:** Exposed concrete, luxury vinyl tile, porcelain tile, and carpeting.

IMPROVEMENTS

- ▶ The available space is furnished with existing systems furniture and premium finishes consisting of carpet tile, vinyl composition tile, porcelain / ceramic tile in the Restrooms, and a folding partition separating a large Conference / Training Room.
- ▶ Accent walls, millwork with solid surface countertops, underground power / data in select rooms highlight just a few of the upgraded improvements.

UTILITIES

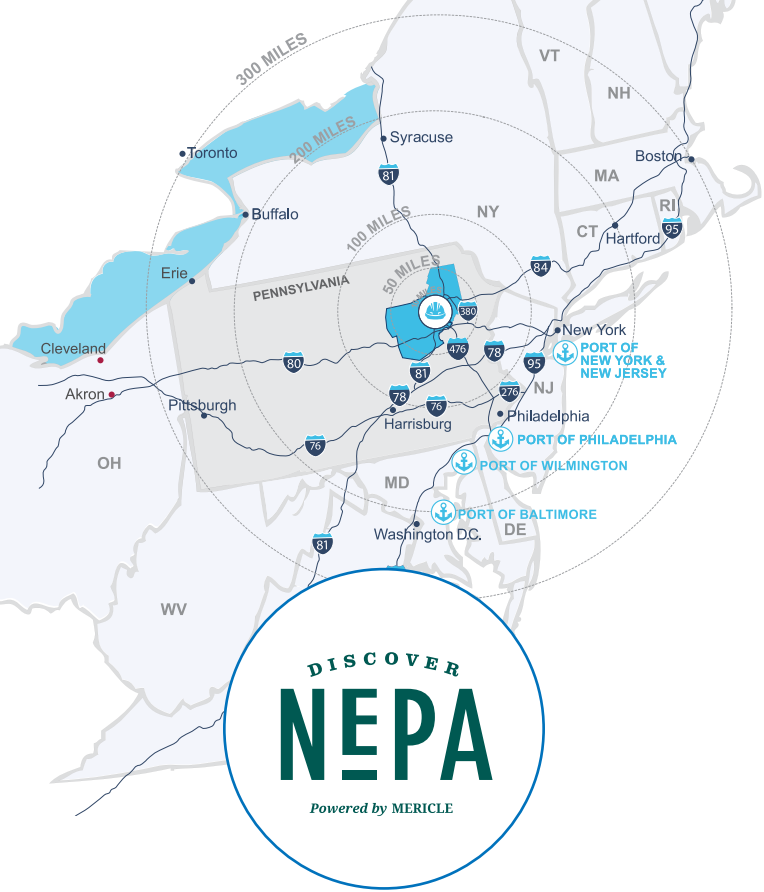
- ▶ **ELECTRIC:** The Building is served by *PPL Electric Utilities* and features a dual cable, 12,470 Volt underground conduit enclosed in concrete with service from two (2) substations (Bear Creek and Pine Ridge) by two (2) separate 68 KV lines with the ability to switch in less than three seconds. The available space shall be served by a 480/277 Volts, 600 Amp electrical service.
- ▶ **TELECOM:** Telecommunication service to the building includes fiber and copper and is provided by *Verizon, Level 3, and Frontier Communications*. All three bring fiber into the first floor utility room of the Existing Building.
- ▶ **LIGHTING:** The lighting throughout the available space is a combination of recessed flat panel LED fixtures and pendant/indirect LED fixtures in the open areas.
- ▶ **HVAC:** HVAC in the available space is provided via a combination of *Trane* constant volume roof top units serving a *Trane Varitrac* Change-Over Bypass VAV system and *Trane* VAV roof top units with electric reheats in perimeter VAV boxes.
- ▶ **FIRE PROTECTION:** Ordinary Hazard Class III commodity wet pipe sprinkler system.
- ▶ All utilities are separately metered.

PARKING

- ▶ On-site parking for a total of approx. (566) parking spaces with approx. (142) vehicle spaces dedicated to the available first floor area.

SITE FEATURES

- ▶ The property is professionally landscaped with a water feature at the main entrance and is surrounded by sidewalks with access to a shared outdoor patio area with a covered gazebo.
- ▶ Two (2) multi-tenant, marquee signs are available on site for corporate/company branding.



CENTRALLY LOCATED ON NORTHEASTERN PENNSYLVANIA'S I-81 CORRIDOR



TRAVEL DISTANCES

CITY	MI AWAY
Wilkes-Barre, PA	3
Scranton, PA	14
Hazleton, PA	34
Delaware Water Gap, PA	51
Allentown, PA	59
Binghamton, NY	78
Morristown, NJ	101
Philadelphia, PA	109
Harrisburg, PA	109
New York, NY	123
Syracuse, NY	148
Baltimore, MD	189
Hartford, CT	206
Washington, DC	232
Pittsburgh, PA	270

Northeastern Pennsylvania (NEPA) is close to big cities, but features affordable living, safe neighborhoods, access to recreation, and the opportunity to be heard and make a difference.

Check out **DiscoverNEPA.com** (search "Wilkes-Barre") for events, shopping, dining and many, many things to do!

Mericle is Northeastern Pennsylvania proud.



Mericle, a Butler Builder®, is proud to be part of a network of building professionals dedicated to providing you the best construction for your needs.

BOB BESECKER, Vice President
bbesecker@mericle.com

JIM HILSHER, Vice President
jhilsher@mericle.com

BILL JONES, Vice President
bjones@mericle.com

To learn more, please call one of us at 570.823.1100 to request a proposal and/or arrange a tour.

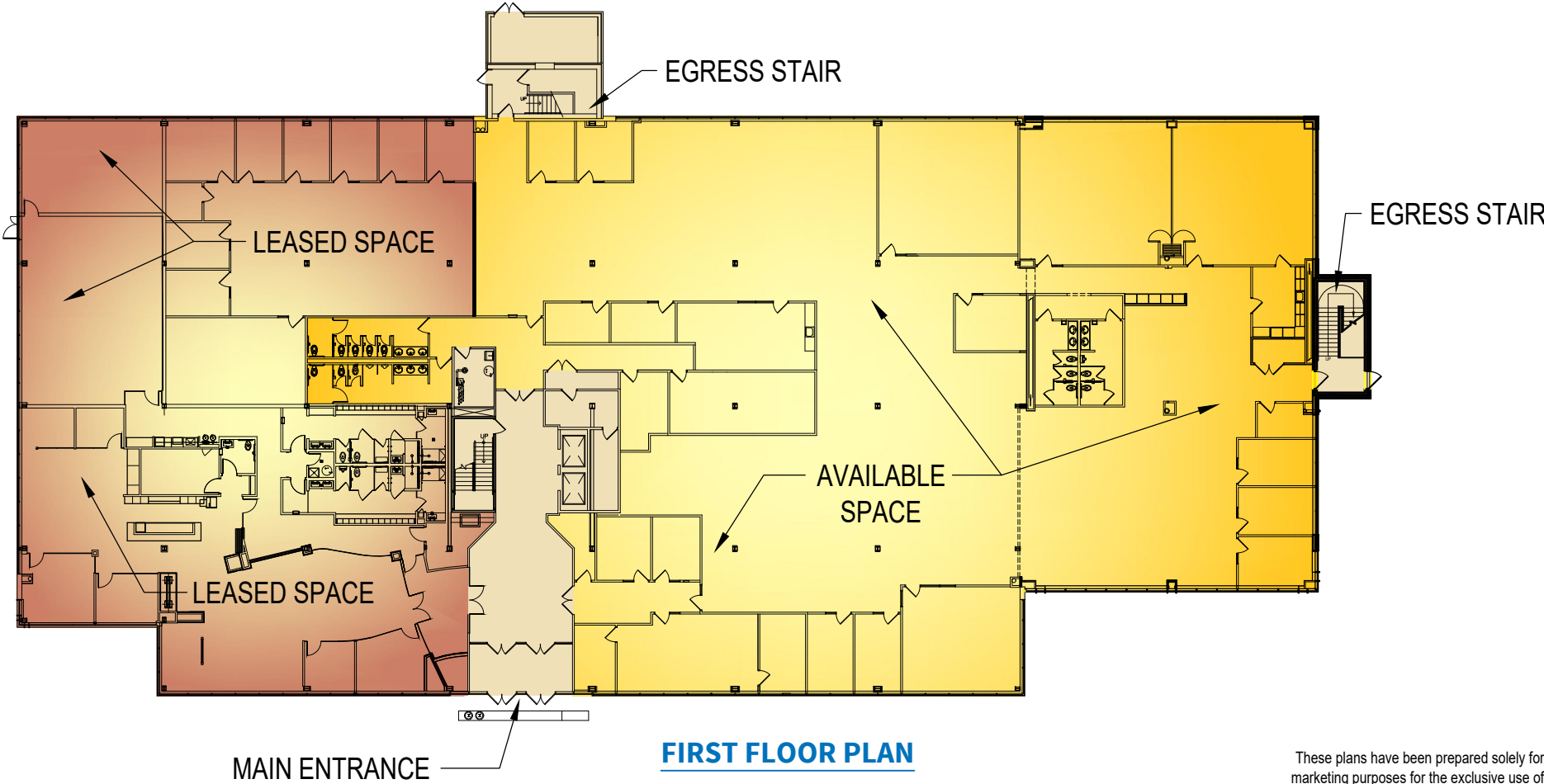
mericle.com  570.823.1100



CONCEPTUAL BUILDING PLAN

AVAILABLE 20,394 S.F. SPACE
WITHIN AN EXISTING 126,413 S.F. BUILDING

PARCEL #29
100 BALTIMORE DRIVE
EAST MOUNTAIN CORPORATE CENTER
WILKES-BARRE, PA 18702



FIRST FLOOR PLAN

These plans have been prepared solely for marketing purposes for the exclusive use of -- Mericle Commercial Real Estate Services

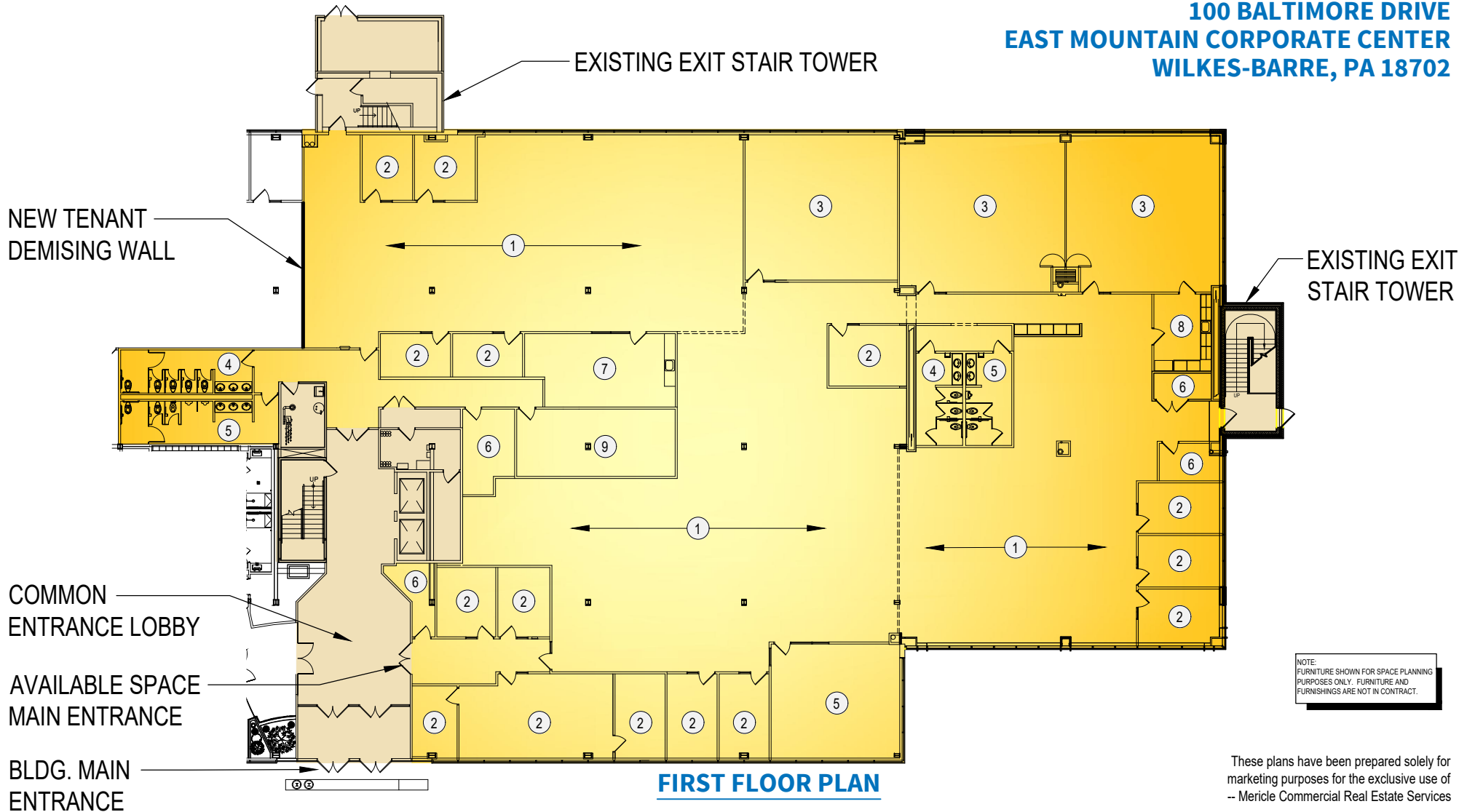
Q:\Shared\Properties\EMCC\100 Baltimore (29) (J2289)\Base Bldg. (J2289)\2289\mcd\dwg-spec\Marketing\MRKT-100 BALTIMORE DRIVE - 1ST FLOOR (051324).dwg MP

CONCEPTUAL FLOOR PLAN

**AVAILABLE 20,394 S.F. SPACE
WITHIN AN EXISTING 126,413 S.F. BUILDING**

**PARCEL #29
100 BALTIMORE DRIVE
EAST MOUNTAIN CORPORATE CENTER
WILKES-BARRE, PA 18702**

- ① OPEN OFFICE AREA
- ② OFFICE
- ③ CONFERENCE / TRAINING ROOM
- ④ WOMEN'S ROOM
- ⑤ MEN'S ROOM
- ⑥ STORAGE
- ⑦ BREAK ROOM
- ⑧ PANTRY
- ⑨ UPS / IT ROOM



Q:\Shared\Properties\EMCC\100 Baltimore (29) (J2289)\Base Bldg. (J2289)\2289\mcd\dwg-spec\Marketing\MRKT-100 BALTIMORE DRIVE - 1ST FLOOR (051324).dwg MP

570.823.1100



mericle.com



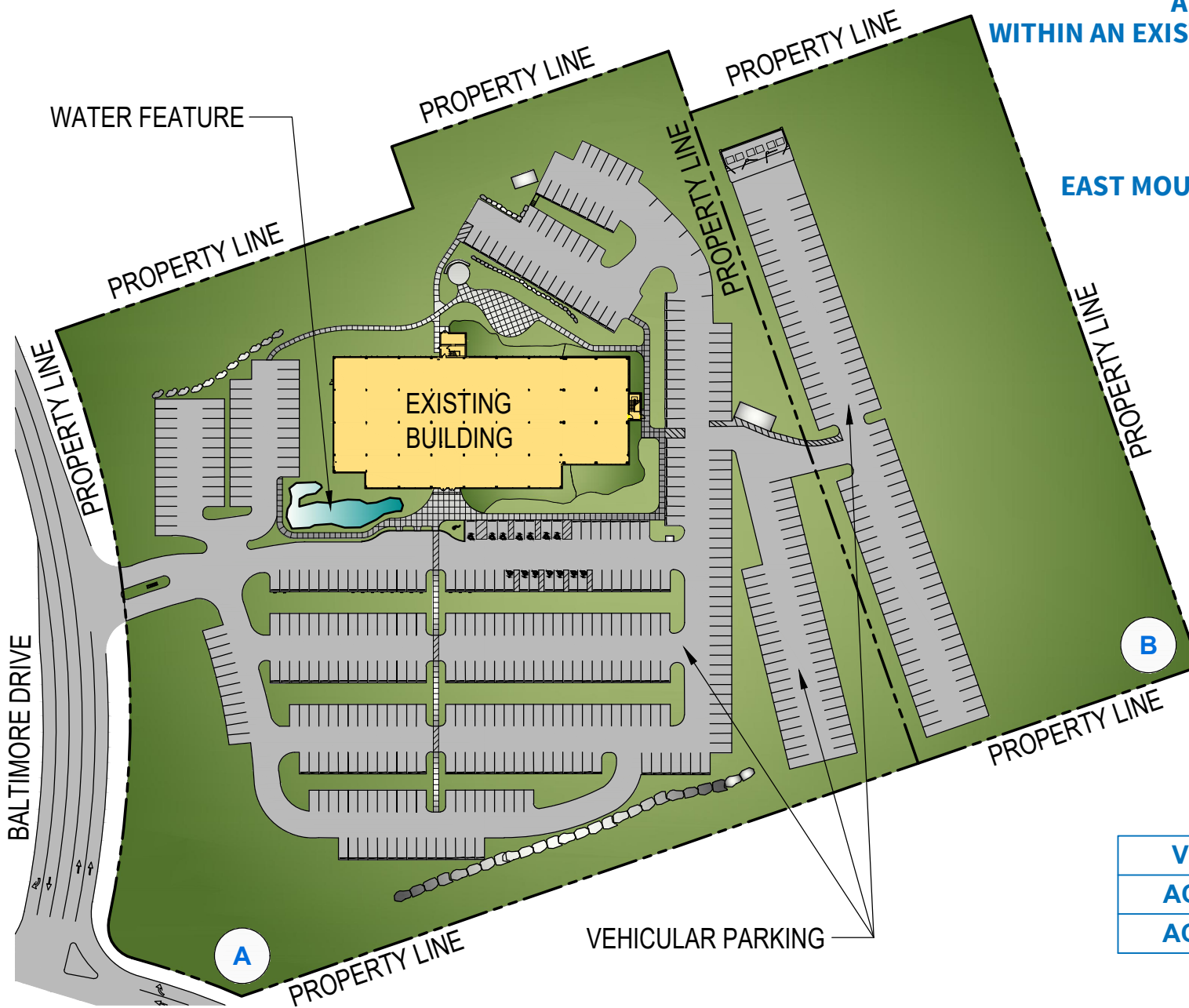
East Mountain Corporate Center
100 Baltimore Drive, Wilkes-Barre, PA 18702

WE BUILD BUILDINGS.
WE BUILD CAREERS.
WE BUILD COMMUNITIES.

CONCEPTUAL SITE PLAN

**AVAILABLE 20,394 S.F. SPACE
WITHIN AN EXISTING 126,413 S.F. BUILDING**

**PARCEL #29
100 BALTIMORE DRIVE
EAST MOUNTAIN CORPORATE CENTER
WILKES-BARRE, PA 18702**



VEHICULAR PARKING	142
ACREAGE (PARCEL A)	10.12
ACREAGE (PARCEL B)	4.00

These plans have been prepared solely for marketing purposes for the exclusive use of -- Mericle Commercial Real Estate Services

Q:\Shared\Properties\EMCC\100 Baltimore (29) (J2289)\Base Bldg. (J2289)\mcd\dwg-spec\Marketing\MRKT-100 BALTIMORE DRIVE - 1ST FLOOR (051324).dwg MP

570.823.1100



mericle.com



East Mountain Corporate Center
100 Baltimore Drive, Wilkes-Barre, PA 18702

WE BUILD BUILDINGS.
WE BUILD CAREERS.
WE BUILD COMMUNITIES.

SITE IMPROVEMENTS

- Total site acreage consisting of 14.12 acres - Parcel A contains approximately 10.12 acres and Parcel B contains approximately 4.00 acres
- On-site parking for a total of approximately five hundred sixty-six (566) parking spaces with approximately one hundred forty-two (142) vehicle spaces dedicated to the available first floor area
- The property is professionally landscaped with a water feature at the main entrance and is surrounded by sidewalks with access to a shared outdoor patio area with a covered gazebo.
- Two (2) multi-tenant, marquee signs are available on site for corporate / company branding

BUILDING IMPROVEMENTS

- The Building is a four-story Class A Office Building containing 126,413 square feet
- The available space consists of 20,394 square feet and is located on the first floor with access through the recently renovated modern first floor main lobby area
- The building structure is a steel structure by *Butler Manufacturing* and contains 4" concrete floor slabs on each floor
- The exterior walls are designed with a combination of brick masonry veneer and thermally-broken, aluminum frame ribbon windows and storefront window systems with bronze tinting and architectural features such as full height glass walls in select areas
- The roof is a fully-adhered EPDM roof with interior storm leaders
- The available space is furnished with existing systems furniture and premium finishes consisting of carpet tile, vinyl composition tile, porcelain / ceramic tile in the Restrooms, and a folding partition separating a large Conference / Training Room. Accent walls, millwork with solid surface countertops, underground power / data in select rooms highlight just a few of the upgraded improvements

UTILITIES AND BUILDING SYSTEMS

- The Building is served by *PPL Electric Utilities* and features a dual cable, 12,470 volt underground conduit enclosed in concrete with service from two (2) substations (Bear Creek and Pine Ridge) by two (2) separate 68 KV lines with the ability to switch in less than three seconds. The available space shall be served by a 480/277 volts, 600 amp electrical service
- Telecommunication service to the building includes fiber and copper and is provided by Verizon, Level 3 and Frontier Communications. All three bring fiber into the first floor utility room of the Existing Building
- The lighting throughout the available space is a combination of recessed flat panel LED fixtures and pendant / indirect LED fixtures in the open areas
- HVAC in the available space is provided via a combination of *Trane* constant volume roof top units serving a *Trane Varitrac* Change-Over Bypass VAV system and *Trane* VAV roof top units with electric reheats in perimeter VAV boxes
- Building is fully sprinklered with an Ordinary Hazard Class III commodity wet pipe sprinkler system
- All utilities are separately metered

**AVAILABLE 20,394 S.F. SPACE
WITHIN AN EXISTING 126,413 S.F. BUILDING**

**PARCEL #29
100 BALTIMORE DRIVE
EAST MOUNTAIN CORPORATE CENTER
WILKES-BARRE, PA 18702**

These plans have been prepared solely for marketing purposes for the exclusive use of -- Mericle Commercial Real Estate Services

Q:\Shared\Properties\EMCC\100 Baltimore (29) (J2289)\Base Bldg. (J2289)\2289\mdc\dwg-spec\Marketing\MRKT-100 BALTIMORE DRIVE - 1ST FLOOR (051324).dwg MP





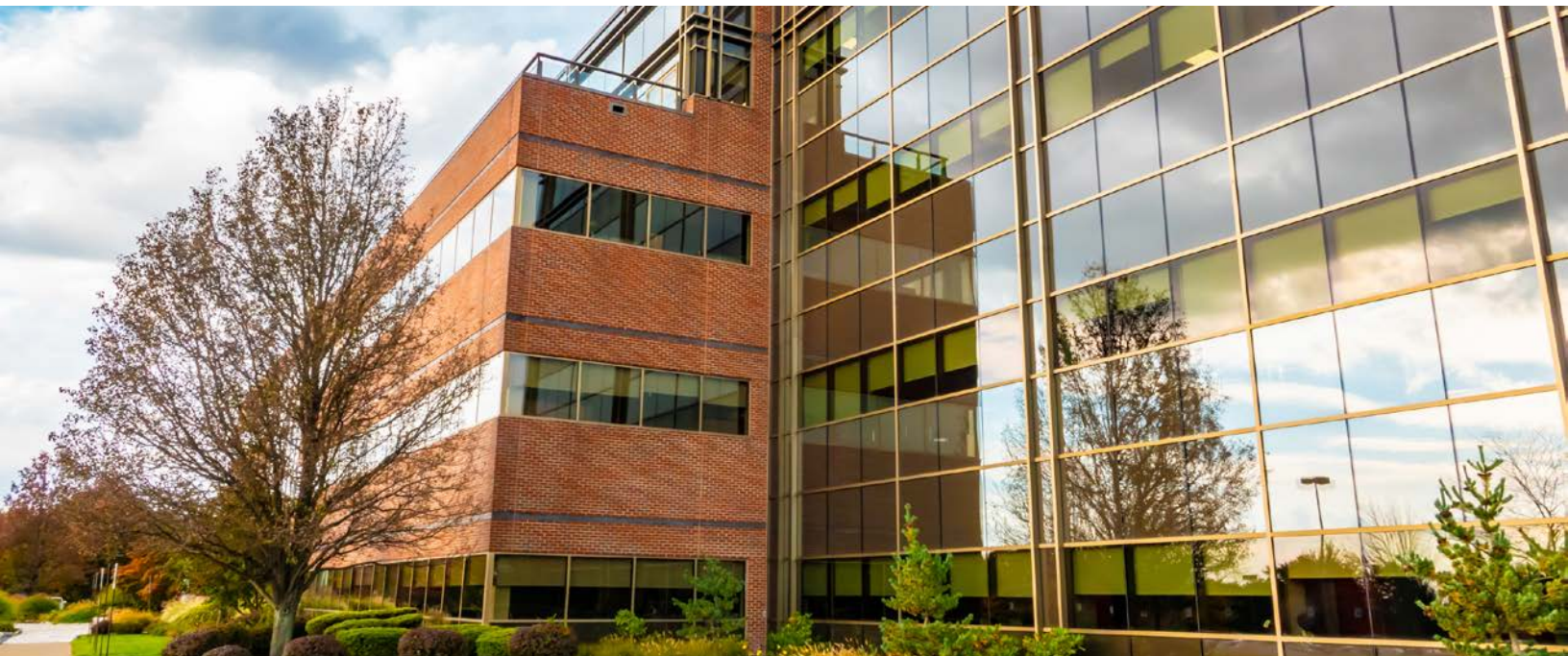
**FOR
LEASE**

20,394 SF

**100 BALTIMORE DRIVE
EAST MOUNTAIN CORPORATE CENTER
PLAINS TOWNSHIP (WILKES-BARRE), PA**

.....

**PHOTO
COLLAGE**



FOR LEASE

100 BALTIMORE DRIVE, WILKES-BARRE, PA

mericlereadytogo.com/100baltimore



FOR LEASE

100 BALTIMORE DRIVE, WILKES-BARRE, PA

mericlereadytogo.com/100baltimore



FOR LEASE

100 BALTIMORE DRIVE, WILKES-BARRE, PA

mercireadytogo.com/100baltimore



FOR LEASE

100 BALTIMORE DRIVE, WILKES-BARRE, PA

mericlereadytogo.com/100baltimore



FOR LEASE

100 BALTIMORE DRIVE, WILKES-BARRE, PA

mercireadytogo.com/100baltimore



Mericle, a Butler Builder®, is proud to be part of a network of building professionals dedicated to providing you the best construction for your needs.

BOB BESECKER, *Vice President*
bbesecker@mericle.com

JIM HILSHER, *Vice President*
jhilsher@mericle.com

BILL JONES, *Vice President*
bjones@mericle.com

To learn more, please call one of us at 570.823.1100 to request a proposal and/or arrange a tour.

mericle.com  570.823.1100

