



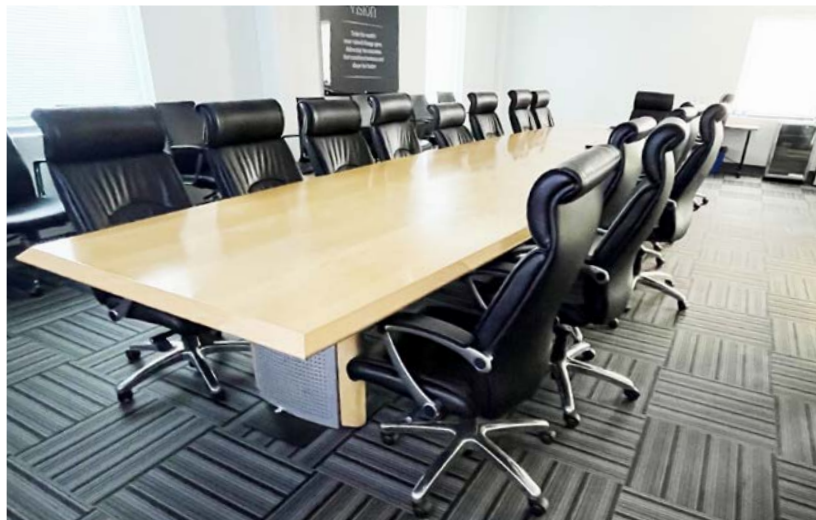
**FOR  
LEASE**

# 21,327 SF

**349-357 NEW COMMERCE BOULEVARD  
HANOVER INDUSTRIAL ESTATES  
HANOVER TOWNSHIP, PA**

.....

**INDUSTRIAL**



**PRIME OFFICE SPACE JUST MINUTES FROM I-81**

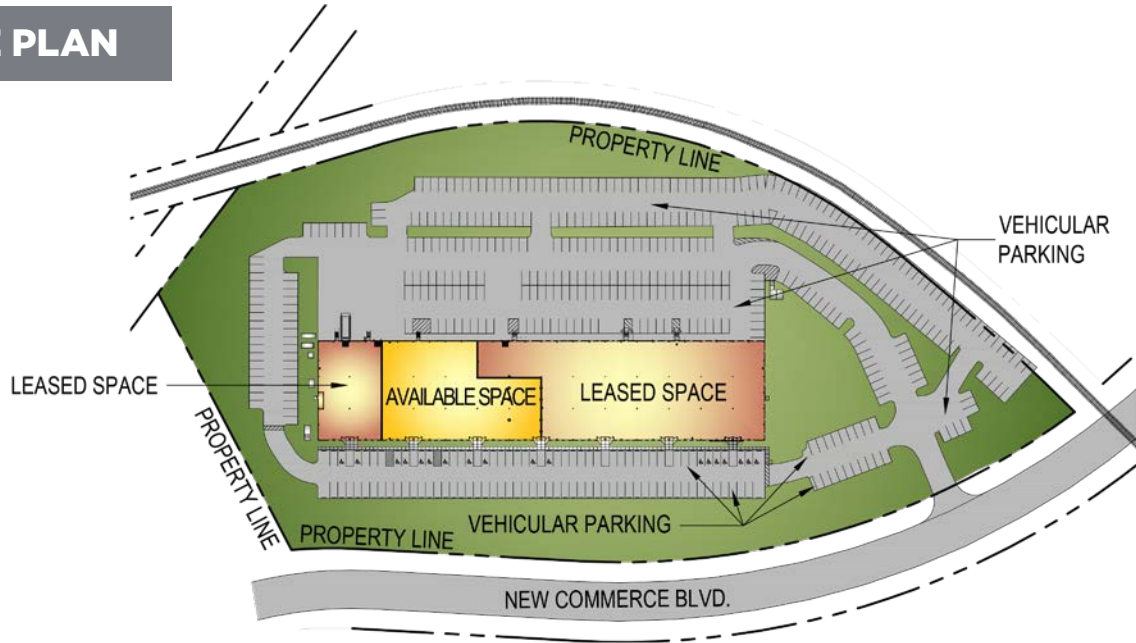
**mericle.com**  **570.823.1100**



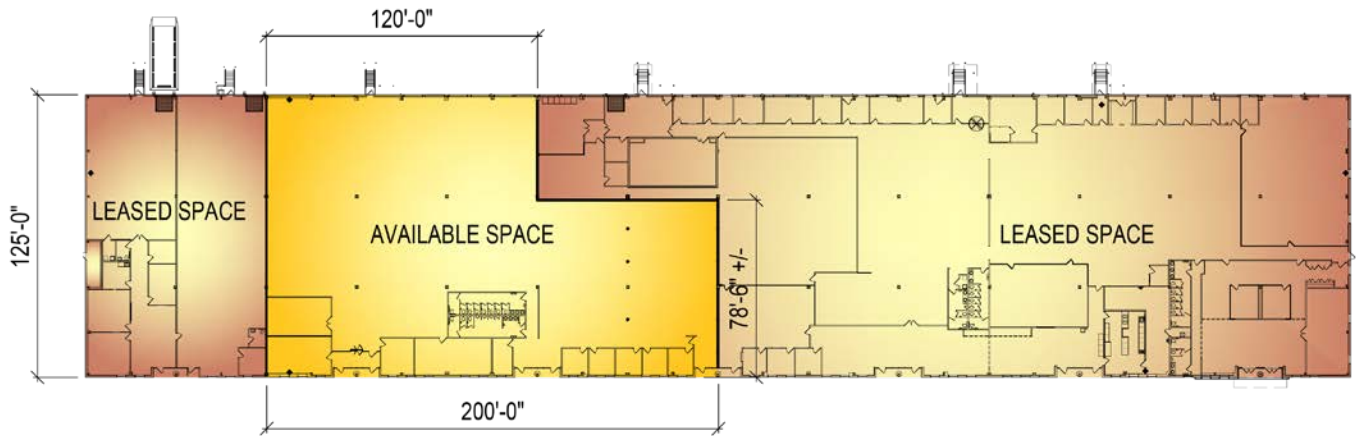
# PLANS

Information shown is purported to be from reliable sources. No representation is made to the accuracy thereof, and is submitted subject to errors, omissions, prior sale/lease, withdrawal notice, or other conditions.

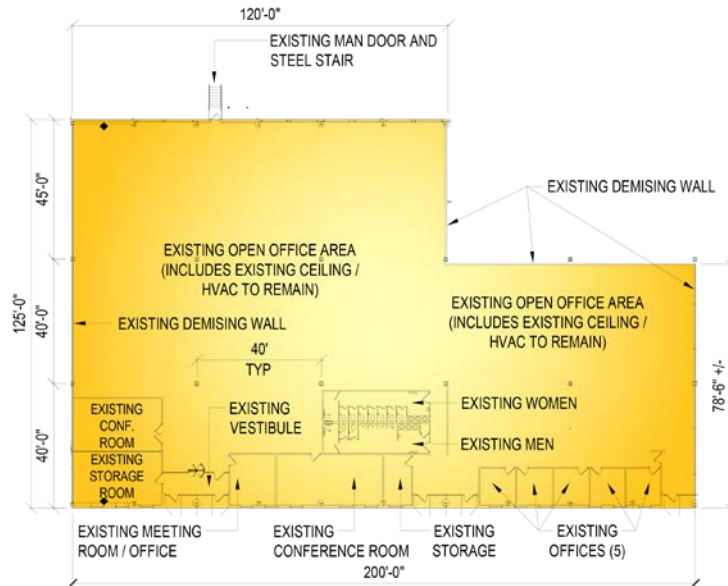
## SITE PLAN



## BUILDING PLAN



## FLOOR PLAN



FOR LEASE

349-357 NEW COMMERCE BLVD., HANOVER TOWNSHIP, PA

[mericle.com](http://mericle.com) | [mericlereadytogo.com](http://mericlereadytogo.com)

# SPECS

*Information shown is purported to be from reliable sources. No representation is made to the accuracy thereof, and is submitted subject to errors, omissions, prior sale/lease, withdrawal notice, or other conditions.*

## SIZE

- ▶ **AVAILABLE SPACE:** Available 21,327 SF space within an existing 70,000 SF building.
- ▶ **ACREAGE:** 10.52 acres
- ▶ **BUILDING DIMENSIONS:** 560'-0" (length) x 125'-0" (width)

## BUILDING CONSTRUCTION

- ▶ **FLOOR:** 6" thick concrete floor slab reinforced with welded steel mats.
- ▶ **ROOF:** Butler Manufacturing, MR-24 standing seam.
- ▶ **EXTERIOR WALLS:** Architectural masonry, aluminum frame windows, metal panels with insulation, and aluminum frame curtainwall entrances with canopies
- ▶ **CLEAR CEILING HEIGHT:** Average clear structural height of approximately 28'-7".
- ▶ **COLUMN SPACING:** 40'-0" x 40'-0" bay spacing with a 45'-0" deep staging bay.

## UTILITIES

- ▶ **HVAC:** Multiple packaged gas/electric roof top units.
- ▶ **LIGHTING:** 2 x 4 fluorescent lay-in troffer fixtures.
- ▶ **POWER:** Two (2) 400 Amp, 120/208 Volt, 3-phase service.
- ▶ **FIRE PROTECTION:** Hazard Class III Wet sprinkler system.
- ▶ **UTILITIES:** All utilities shall be separately metered.

## PARKING

- ▶ On-site parking for approximately (154) vehicles with additional parking up to (303) total vehicular spaces.
- ▶ Asphalt paving, light duty pave in vehicle parking areas.

## SITE FEATURES

- ▶ Professionally prepared & maintained landscaping.



## LABOR DRAW

More than 700,000 people live within 30 miles of Hanover Industrial Estates. Seventeen college campuses with close to 50,000 enrolled students are within an hour drive.

This 21,327 square foot office space is located less than 2 miles from I-81 and is less than 10 minutes from Downtown Wilkes-Barre.

CVS Caremark, Adidas, Patagonia, Chewy.com, Wren Kitchens, and more call Hanover Industrial Estates home.



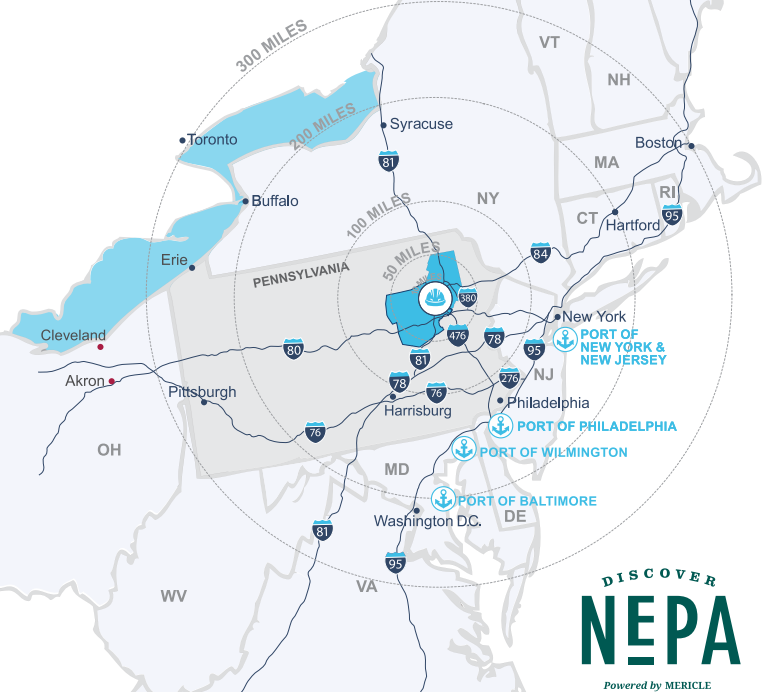
## JOB TRAINING

Job training grants will help reduce your costs in Hanover Industrial Estates. Mericle will arrange meetings between your leadership and the officials who coordinate these programs.

FOR LEASE

349-357 NEW COMMERCE BLVD., HANOVER TOWNSHIP, PA

mericle.com | mericleredytogo.com



Northeastern Pennsylvania (NEPA) is close to big cities, but features affordable living, safe neighborhoods, access to recreation, and the opportunity to be heard and make a difference.

Check out **DiscoverNEPA.com** (search “Wilkes-Barre”) for events, shopping, dining, and many, many things to do!

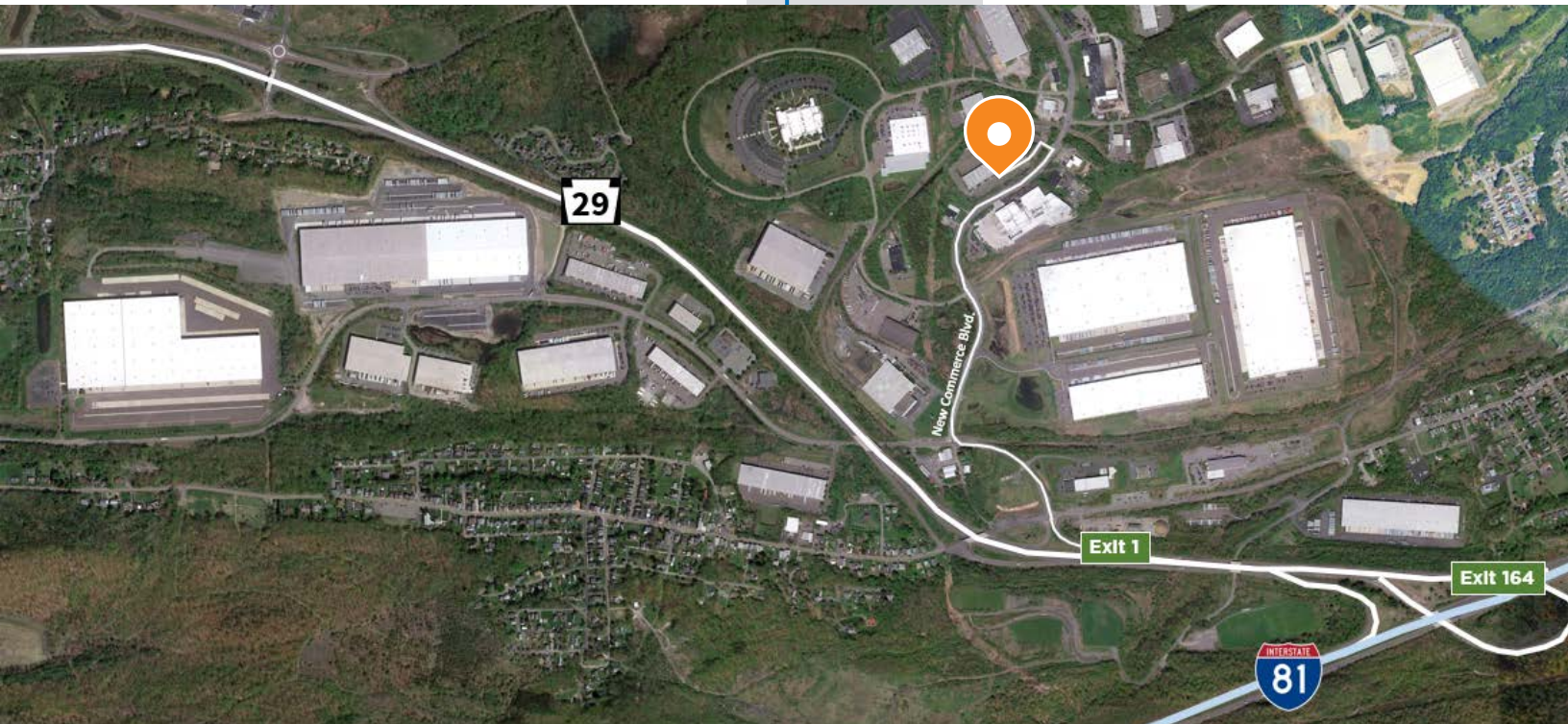
**Mericle is Northeastern Pennsylvania proud.**

# CENTRALLY LOCATED ON NORTHEASTERN PENNSYLVANIA'S I-81 CORRIDOR



## TRAVEL DISTANCES

CITY	MI AWAY
Downtown Wilkes-Barre, PA	5
Scranton, PA	24
Delaware Water Gap, PA	57
Allentown, PA	69
Morristown, NJ	100
Harrisburg, PA	102
Philadelphia, PA	116
Port of Newark, NJ	127
New York, NY	128
Syracuse, NY	155
Baltimore, MD	181
Hartford, CT	212
Washington DC	224
Pittsburgh, PA	263
Boston, MA	313



Mericle, a Butler Builder®, is proud to be part of a network of building professionals dedicated to providing you the best construction for your needs.

**BOB BESECKER, Vice President**  
bbesecker@mericle.com

**JIM HILSHER, Vice President**  
jhilsher@mericle.com

**BILL JONES, Vice President**  
bjones@mericle.com

To learn more, please call one of us at 570.823.1100 to request a proposal and/or arrange a tour.

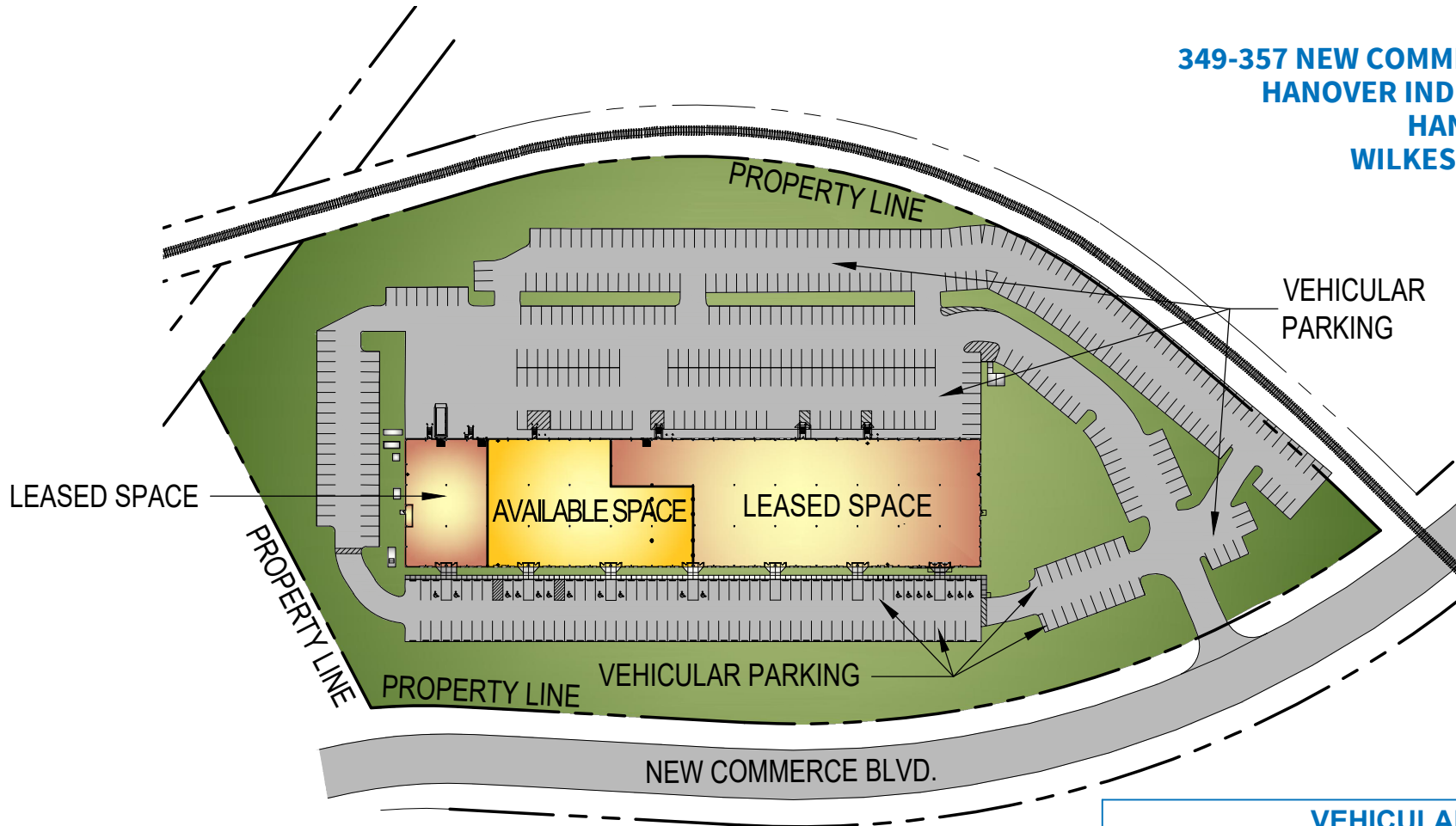
**mericle.com**  **570.823.1100**



# CONCEPTUAL SITE PLAN

**AVAILABLE 21,327 S.F. SPACE  
WITHIN AN EXISTING 70,000 S.F. BUILDING**

**PARCEL #13B  
349-357 NEW COMMERCE BOULEVARD  
HANOVER INDUSTRIAL ESTATES  
HANOVER TOWNSHIP  
WILKES-BARRE, PA 18706**



<b>VEHICULAR PARKING</b>	<b>154</b>
<b>ACREAGE</b>	<b>10.52</b>

These plans have been prepared solely for marketing purposes for the exclusive use of -- Mericle Commercial Real Estate Services

Q:\Shared\Properties\HIE\335 New Commerce (13B) (J2074)\Base Bldg. (J2074)\Project\DBS\Mktg\MKT-349-357 NEW COMMERCE BOULEVARD-21327 SF-OFFICE (110424).dwg MP

570.823.1100



mericle.com



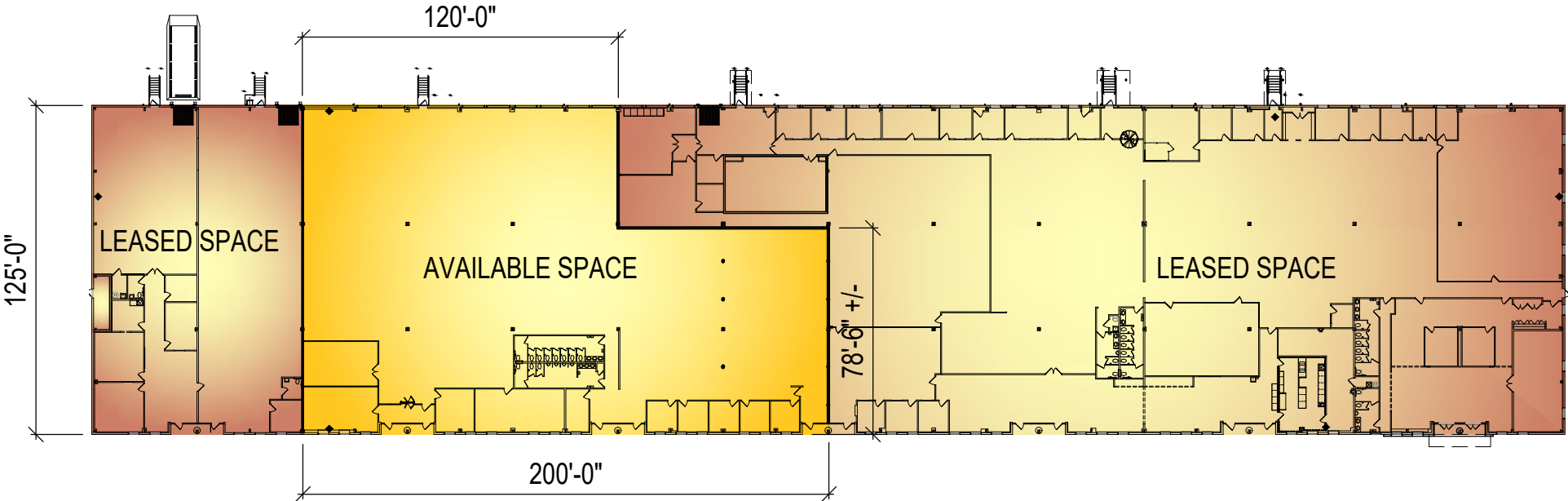
East Mountain Corporate Center  
100 Baltimore Drive, Wilkes-Barre, PA 18702

WE BUILD BUILDINGS.  
WE BUILD CAREERS.  
WE BUILD COMMUNITIES.

# CONCEPTUAL BUILDING PLAN

AVAILABLE 21,327 S.F. SPACE  
WITHIN AN EXISTING 70,000 S.F. BUILDING

PARCEL #13B  
349-357 NEW COMMERCE BOULEVARD  
HANOVER INDUSTRIAL ESTATES  
HANOVER TOWNSHIP  
WILKES-BARRE, PA 18706



These plans have been prepared solely for marketing purposes for the exclusive use of -- Mericle Commercial Real Estate Services

Q:\Shared\Properties\HIE\335 New Commerce (13B) (J2074)\Base Bldg. (J2074)\Project\DBS\Mktg\MKT-349-357 NEW COMMERCE BOULEVARD-21327 SF-OFFICE (110424).dwg MP

570.823.1100



mericle.com



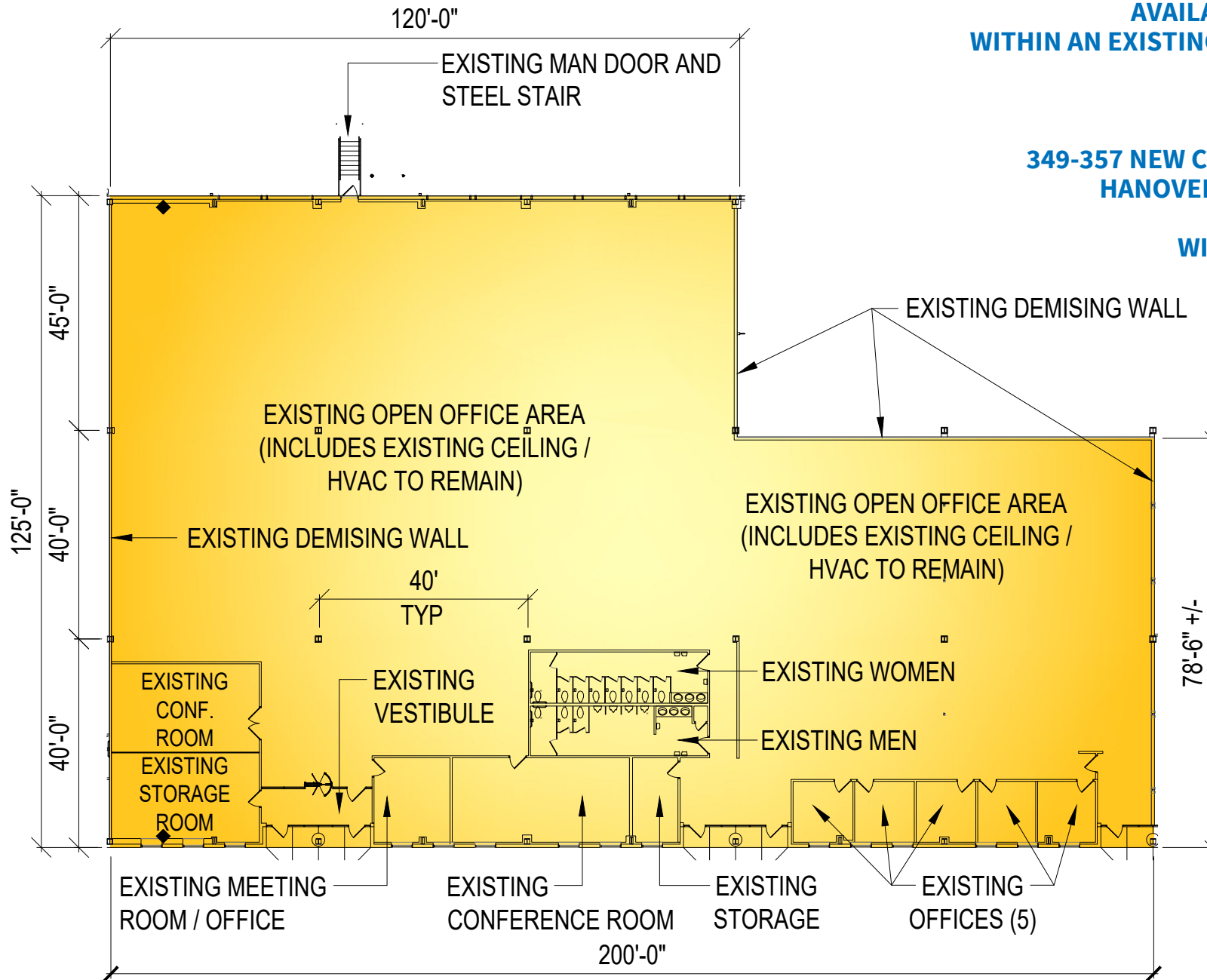
East Mountain Corporate Center  
100 Baltimore Drive, Wilkes-Barre, PA 18702

WE BUILD BUILDINGS.  
WE BUILD CAREERS.  
WE BUILD COMMUNITIES.

# CONCEPTUAL FLOOR PLAN

**AVAILABLE 21,327 S.F. SPACE  
WITHIN AN EXISTING 70,000 S.F. BUILDING**

**PARCEL #13B  
349-357 NEW COMMERCE BOULEVARD  
HANOVER INDUSTRIAL ESTATES  
HANOVER TOWNSHIP  
WILKES-BARRE, PA 18706**



These plans have been prepared solely for marketing purposes for the exclusive use of -- Mericle Commercial Real Estate Services

Q:\Shared\Properties\HIE\335 New Commerce (13B) (J2074)\Base Bldg. (J2074)\Project\DBS\Mktg\MKT-349-357 NEW COMMERCE BOULEVARD-21327 SF-OFFICE (110424).dwg MP

570.823.1100



mericle.com



East Mountain Corporate Center  
100 Baltimore Drive, Wilkes-Barre, PA 18702

WE BUILD BUILDINGS.  
WE BUILD CAREERS.  
WE BUILD COMMUNITIES.

**AVAILABLE 21,327 S.F. SPACE  
WITHIN AN EXISTING 70,000 S.F. BUILDING**

**PARCEL #13B  
349-357 NEW COMMERCE BOULEVARD  
HANOVER INDUSTRIAL ESTATES  
HANOVER TOWNSHIP  
WILKES-BARRE, PA 18706**

## SITE IMPROVEMENTS

- Site contains approximately 10.52 acres
- On-site parking for approximately one hundred fifty-four (154) vehicles with additional parking up to three hundred three (303) total vehicular spaces
- Asphalt paving, light duty pave in vehicle parking areas
- Professionally prepared and maintained landscaping
- Marquee sign at site entrance

## BUILDING IMPROVEMENTS

- Building contains 70,000 square feet
- Building dimensions are 560'-0" (length) x 125'-0" (width)
- The available space is 21,327 square feet
- 40'-0" x 40'-0" bay spacing with a 45'-0" deep staging bay
- 6" thick concrete floor slab reinforced with welded steel mats
- Exterior wall system consisting of architectural masonry, aluminum frame windows, metal panels with insulation and aluminum frame curtainwall entrances with canopies
- Average clear structural height of approximately 28'-7"
- *Butler Manufacturing*, MR-24 standing seam

## UTILITIES AND BUILDING SYSTEMS

- Available space heating system consists of multiple packaged gas/electric roof top units
- Existing electrical service consists of two (2) 400 AMP, 120/208V, 3 phase service
- Available space lighting is 2 x 4 fluorescent lay-in troffer fixtures
- Fire protection system is an ordinary Hazard Class III Wet sprinkler system
- Provisions for domestic water and natural gas are provided
- All utilities are separately metered

These plans have been prepared solely for marketing purposes for the exclusive use of -- Mericle Commercial Real Estate Services

Q:\Shared\Properties\HIE\335 New Commerce (13B) (J2074)\Base Bldg. (J2074)\Project\DBS\Mktg\MKT-349-357 NEW COMMERCE BOULEVARD-21327 SF-OFFICE (110424).dwg MP

